

## XBee



## Table of Contents

XBee .....	1
ABOUT XBee.....	3

## ABOUT XBee

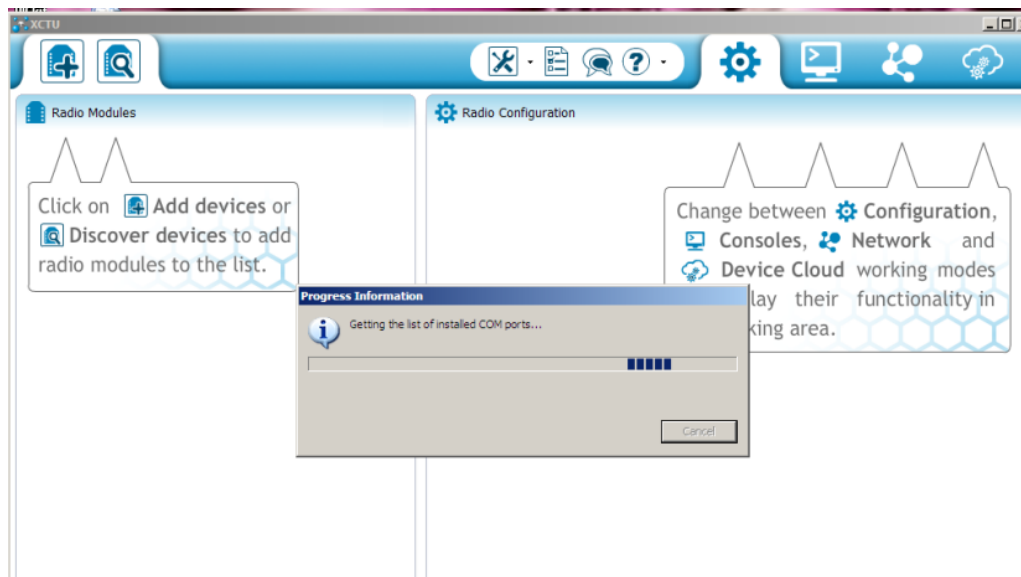
XBee is very easy and popular wireless device. It is a transceiver, it can transmit and it receive data wirelessly. There are several types of XBee module. The very popular XBee is Series 1 (802.15.4), comes with the firmware to create connection for point to point or star network. But bear in mind, many people actually thought it is using ZigBee protocol, but it is not compliance to ZigBee because it uses the low layer of ZigBee protocol only

## SOFTWARE

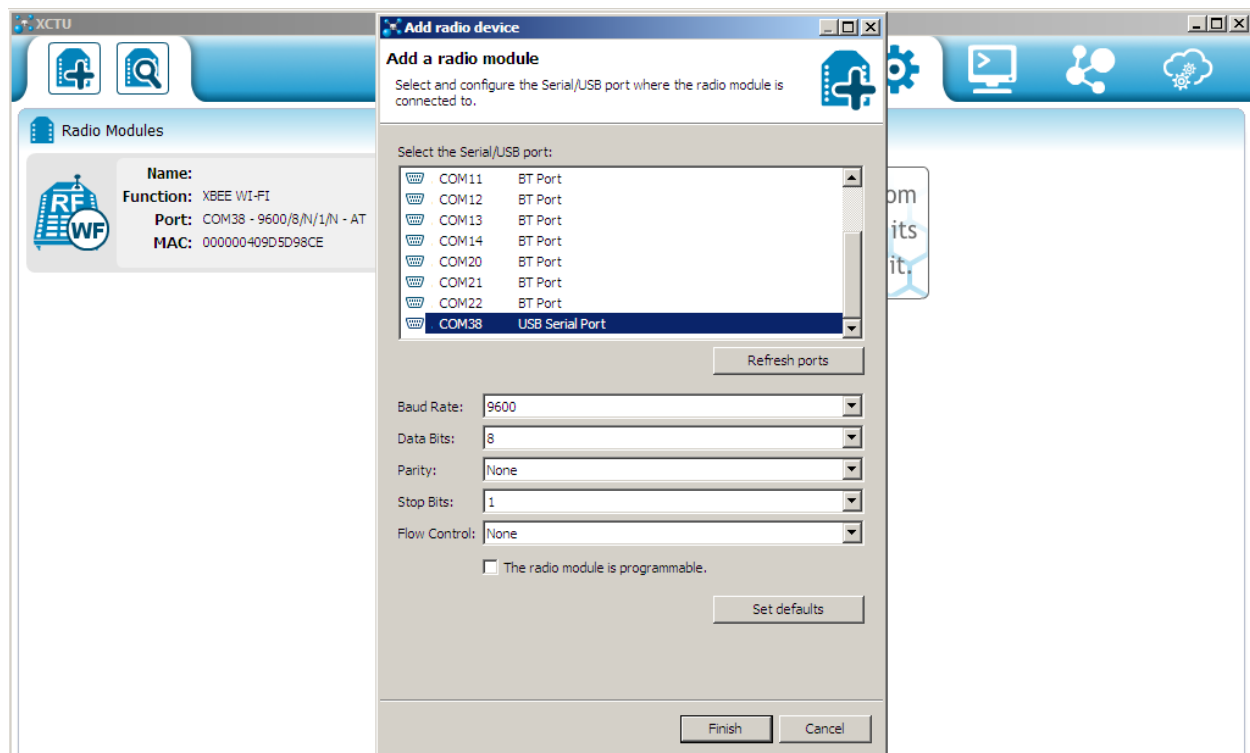
### XCTU V6.1.0.



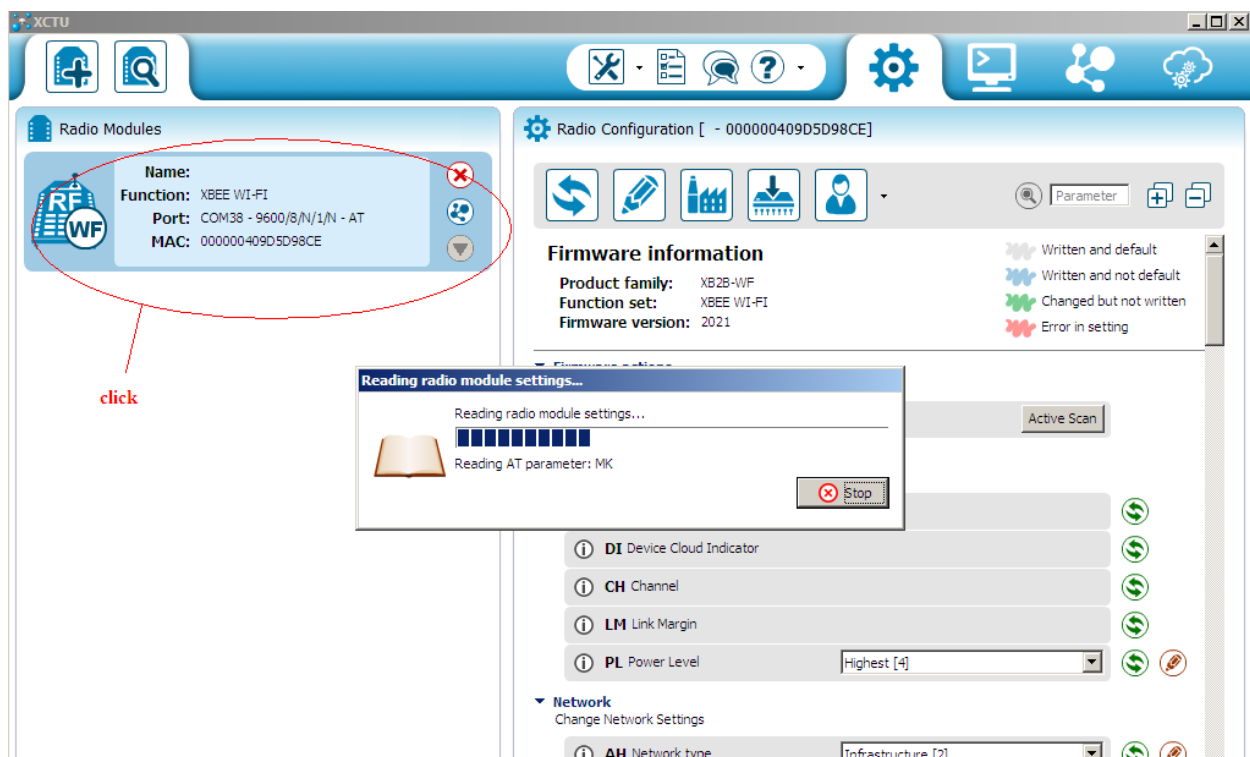
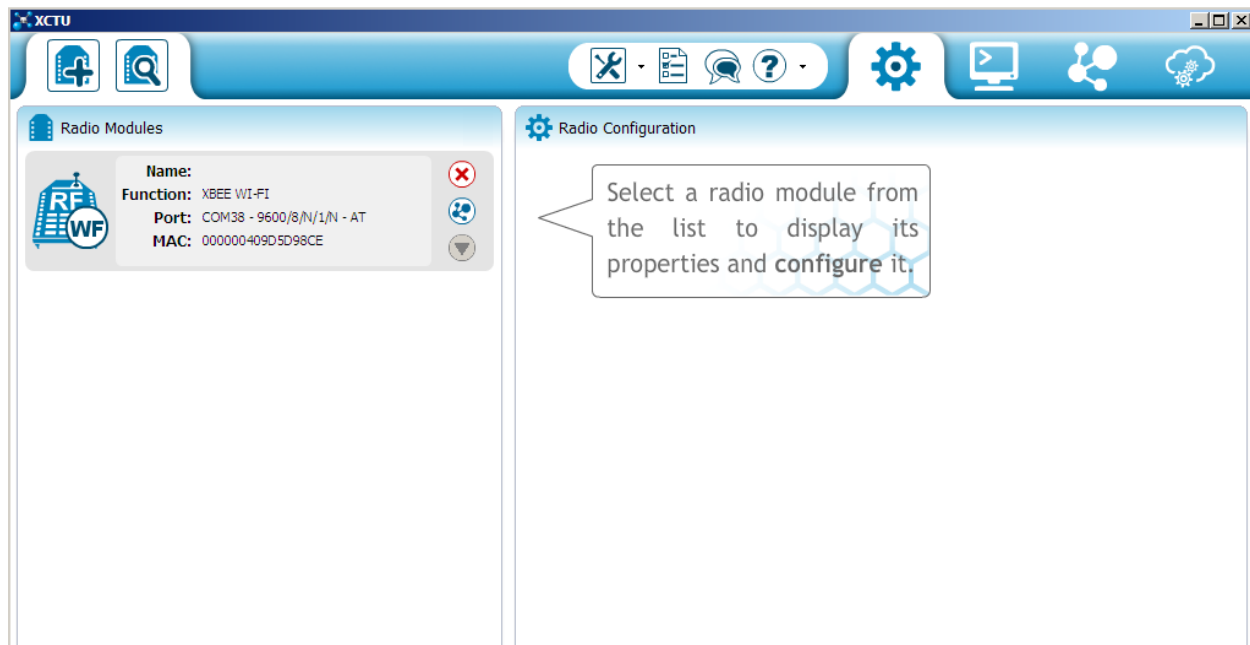
Click on add devices



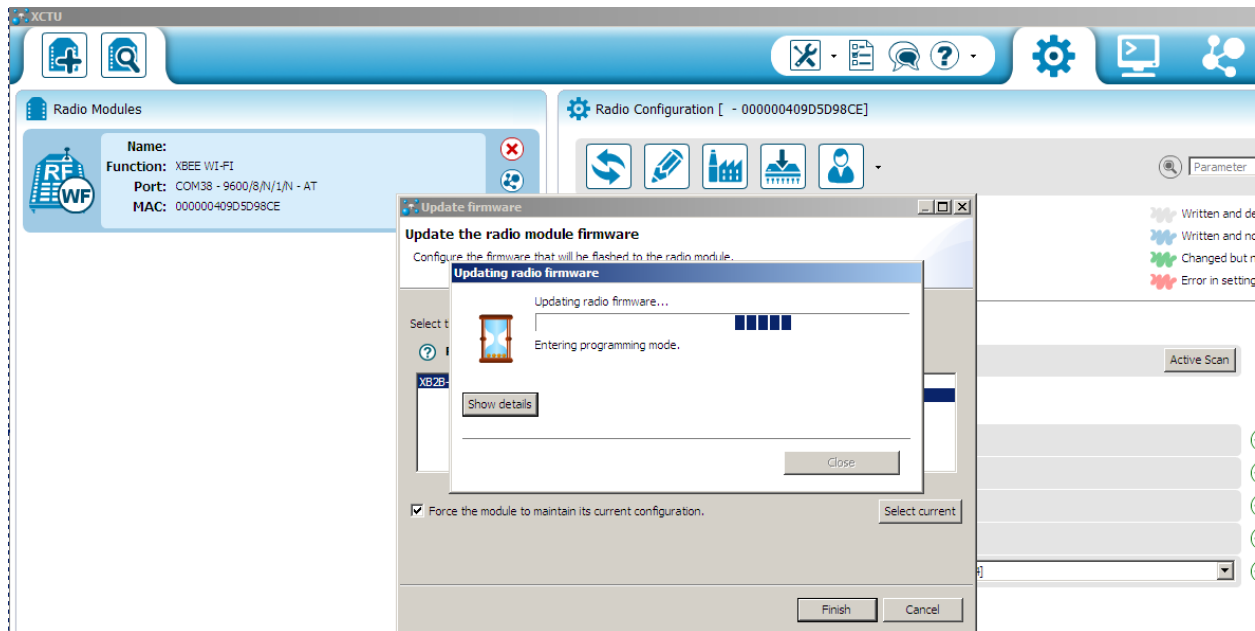
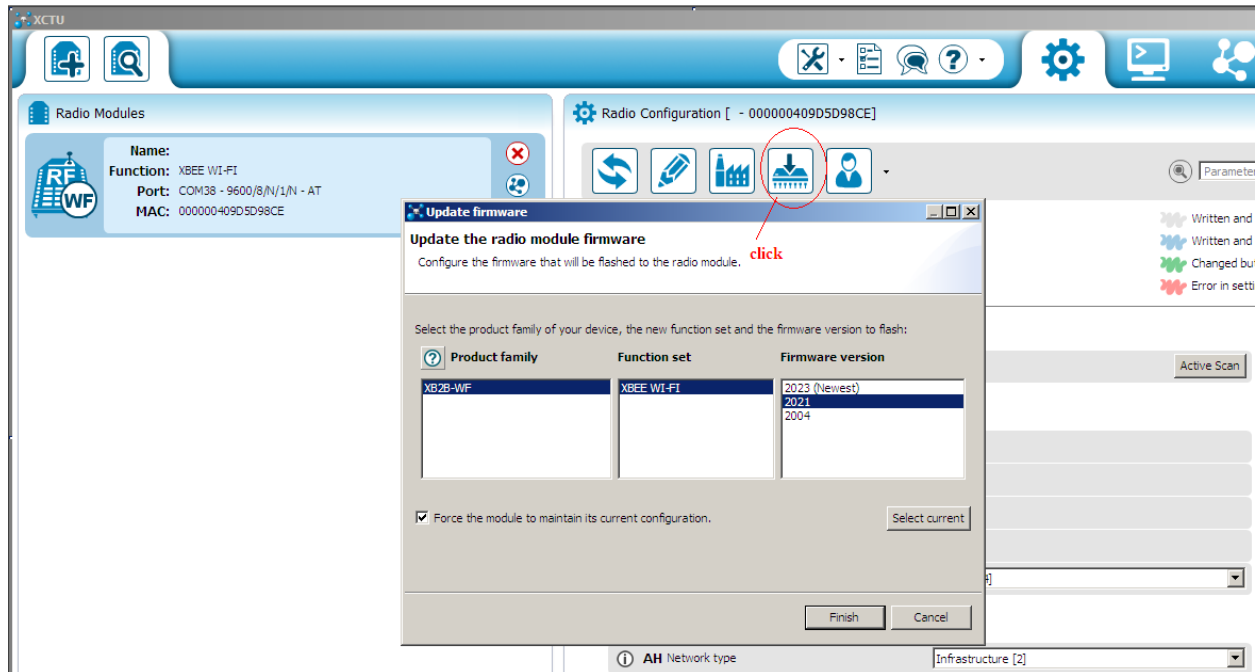
Choose your corresponding comport

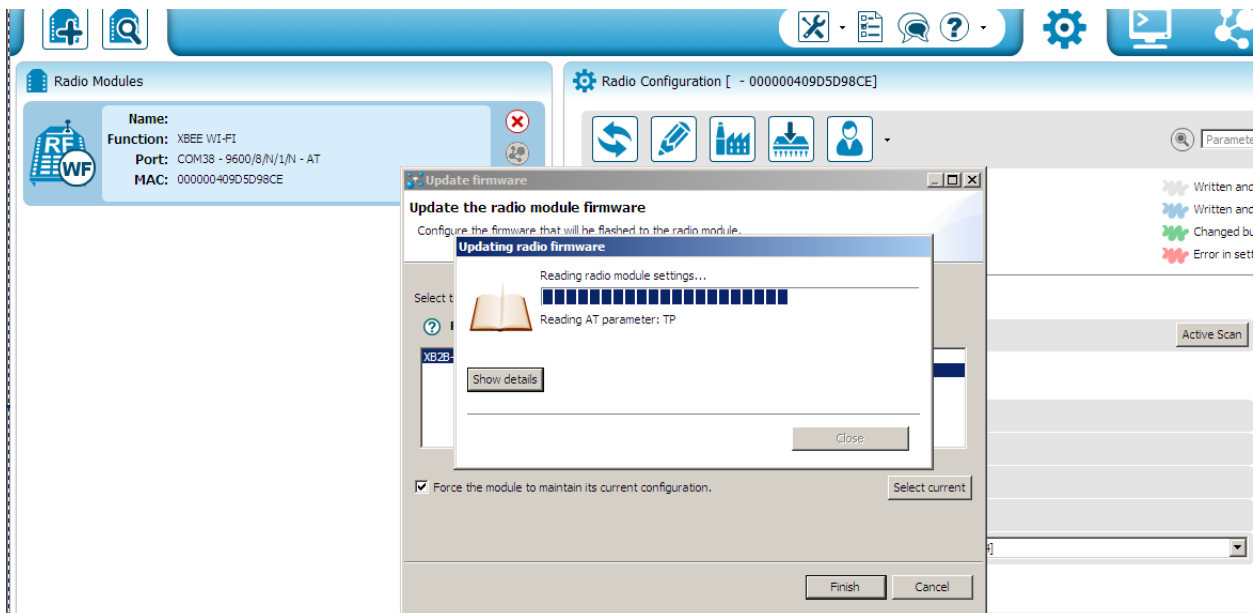
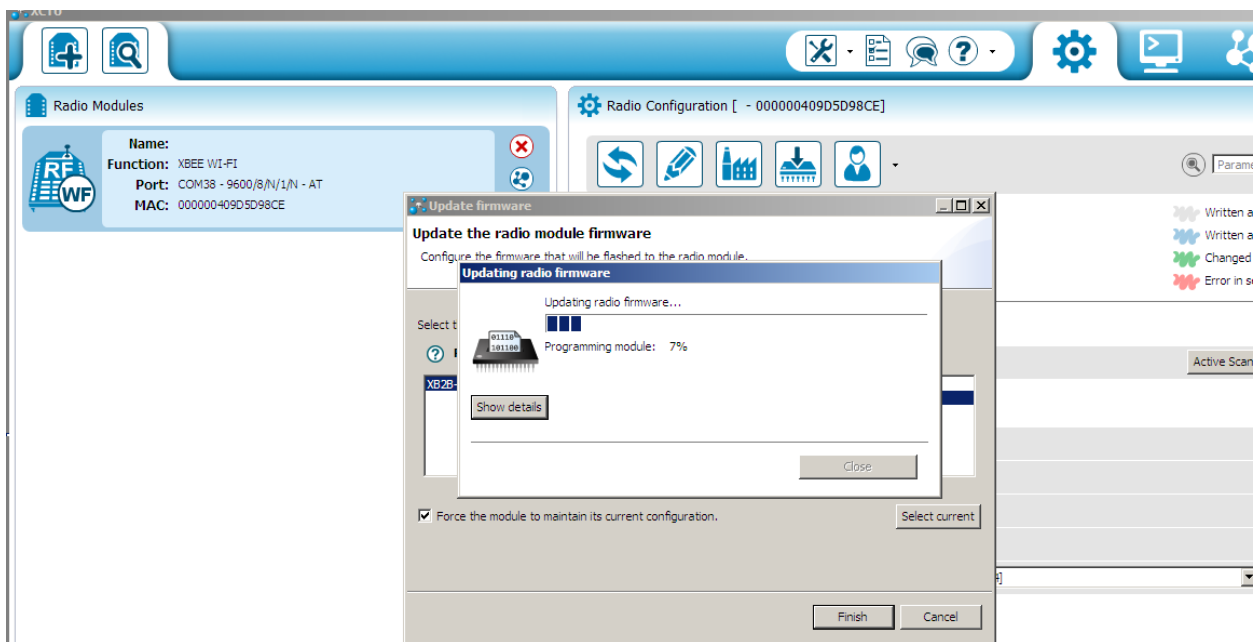


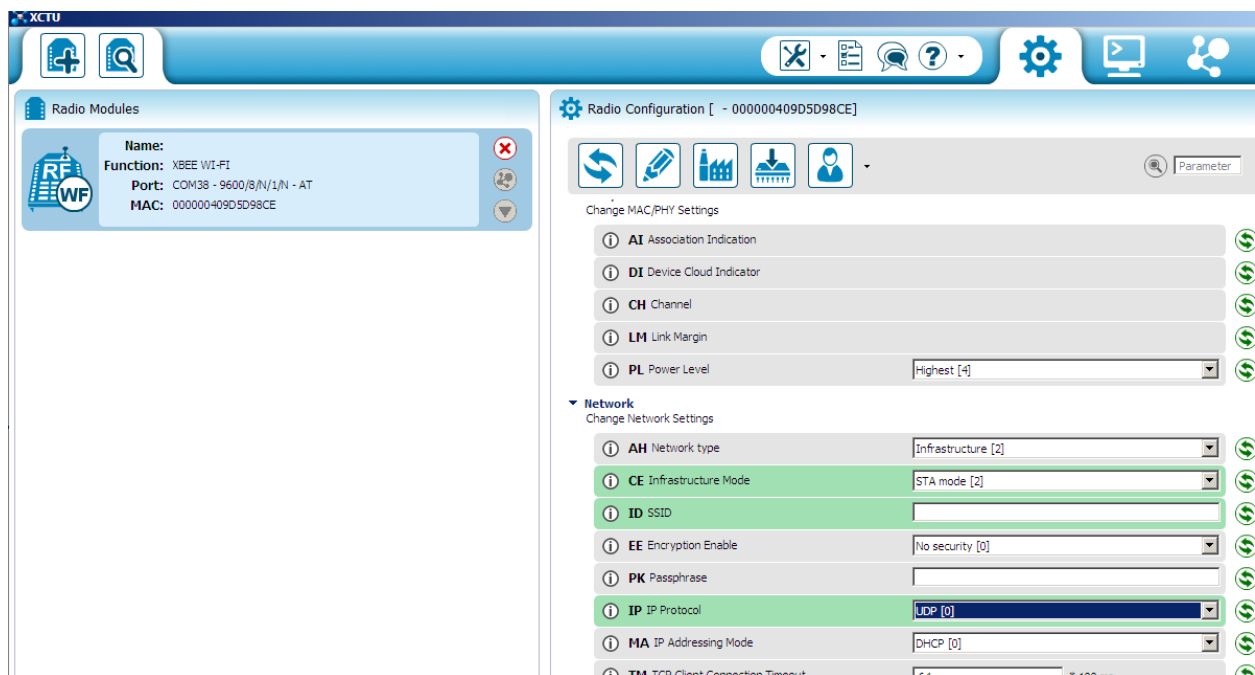
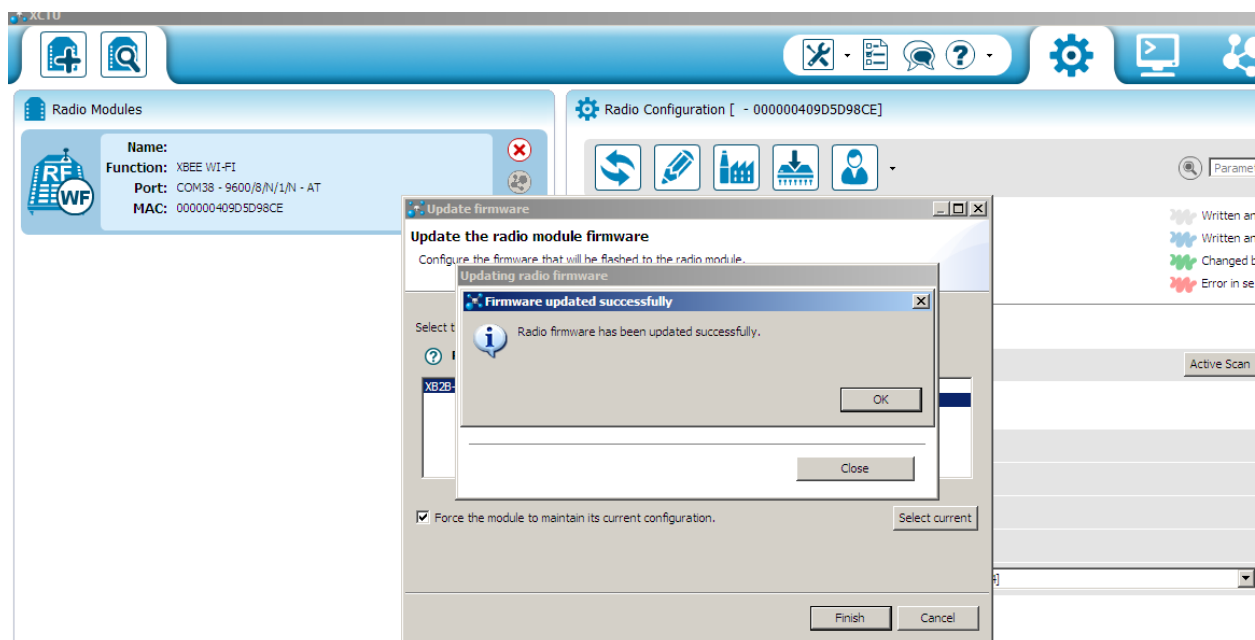
Click on finish



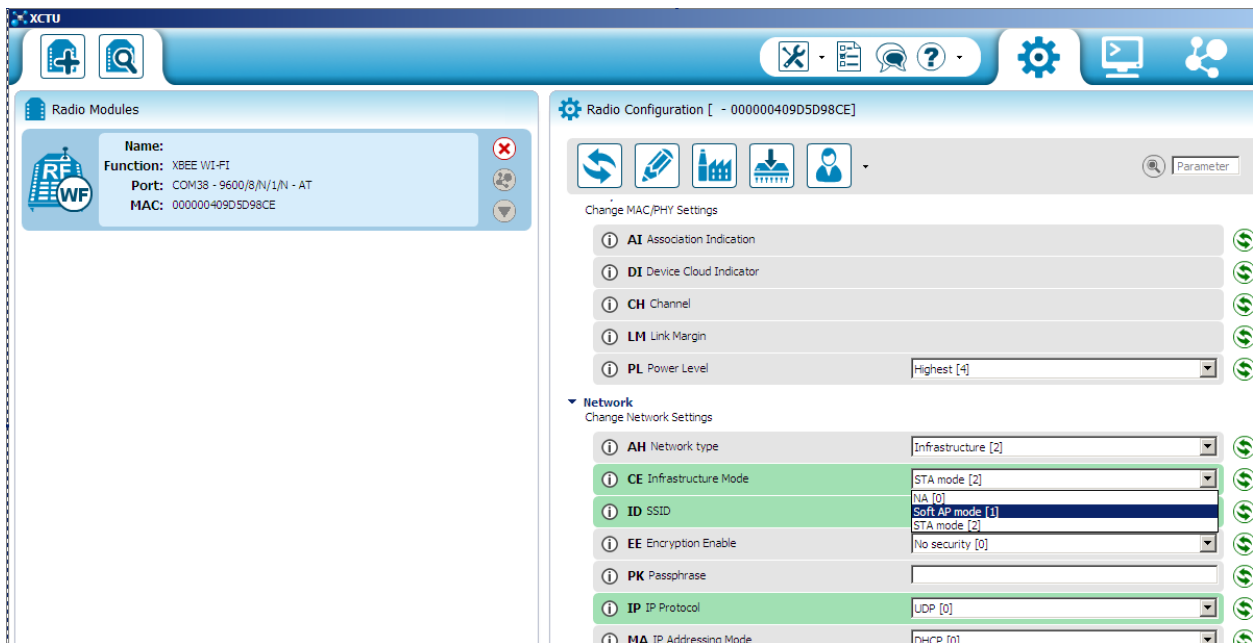
Click on update firmware











**XCTU**

**Radio Modules**

**Name:** XBEE W1-F1  
**Function:** COM38 - 9600/8/N/1/N - AT  
**Port:** COM38 - 9600/8/N/1/N - AT  
**MAC:** 000000409D5D98CE

**Radio Configuration [ - 000000409D5D98CE ]**

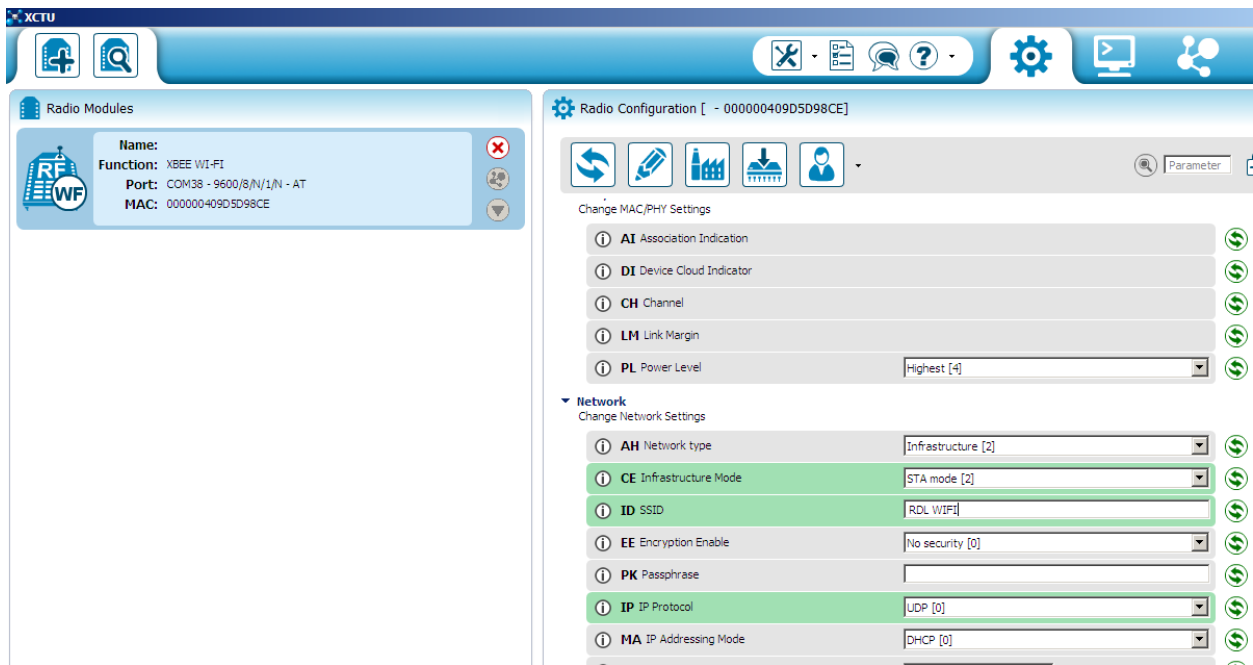
**Change MAC/PHY Settings**

- AI Association Indication
- DI Device Cloud Indicator
- CH Channel
- LM Link Margin
- PL Power Level: Highest [4]

**Network**

**Change Network Settings**

- AH Network type: Infrastructure [2]
- CE Infrastructure Mode: STA mode [2]
- ID SSID: MA [0]  
Soft AP mode [1]  
STA mode [2]
- EE Encryption Enable: No security [0]
- PK Passphrase
- IP IP Protocol: UDP [0]
- MA IP Addressing Mode: DHCP [0]



**XCTU**

**Radio Modules**

**Name:** XBEE W1-F1  
**Function:** COM38 - 9600/8/N/1/N - AT  
**Port:** COM38 - 9600/8/N/1/N - AT  
**MAC:** 000000409D5D98CE

**Radio Configuration [ - 000000409D5D98CE ]**

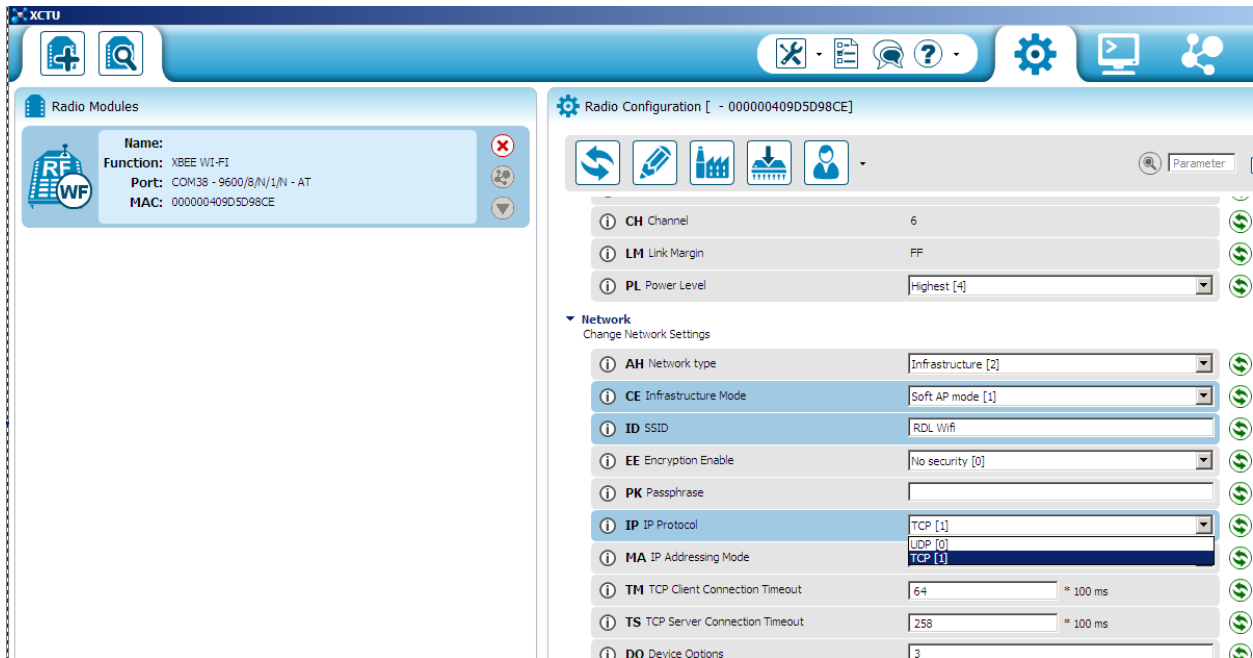
**Change MAC/PHY Settings**

- AI Association Indication
- DI Device Cloud Indicator
- CH Channel
- LM Link Margin
- PL Power Level: Highest [4]

**Network**

**Change Network Settings**

- AH Network type: Infrastructure [2]
- CE Infrastructure Mode: STA mode [2]
- ID SSID: RDL WIFI
- EE Encryption Enable: No security [0]
- PK Passphrase
- IP IP Protocol: UDP [0]
- MA IP Addressing Mode: DHCP [0]



**XCTU**

**Radio Modules**

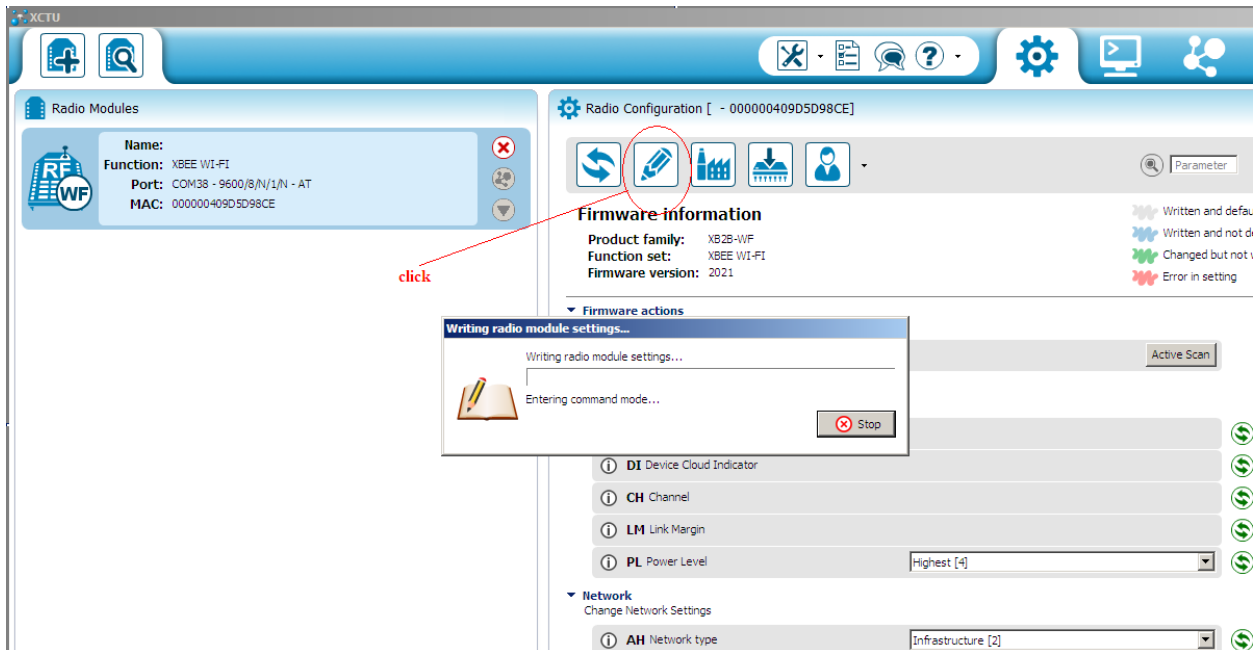
**Name:** XBEE W1-F1  
**Function:** COM38 - 9600/8/N/1/N - AT  
**Port:** COM38 - 9600/8/N/1/N - AT  
**MAC:** 000000409D5D98CE

**Radio Configuration [ - 000000409D5D98CE ]**

**CH** Channel: 6  
**LM** Link Margin: FF  
**PL** Power Level: Highest [4]

**Network**  
 Change Network Settings

**AH** Network type: Infrastructure [2]  
**CE** Infrastructure Mode: Soft AP mode [1]  
**ID** SSID: RDL Wifi  
**EE** Encryption Enable: No security [0]  
**PK** Passphrase:  
**IP** IP Protocol: TCP [1]  
**MA** IP Addressing Mode: DHCP [0]  
**TM** TCP Client Connection Timeout: 64 \* 100 ms  
**TS** TCP Server Connection Timeout: 258 \* 100 ms  
**DO** Device Options: 3



**XCTU**

**Radio Modules**

**Name:** XBEE W1-F1  
**Function:** COM38 - 9600/8/N/1/N - AT  
**Port:** COM38 - 9600/8/N/1/N - AT  
**MAC:** 000000409D5D98CE

**Radio Configuration [ - 000000409D5D98CE ]**

**Firmware information**

**Product family:** XB2B-WF  
**Function set:** XBEE W1-F1  
**Firmware version:** 2021

**Firmware actions**

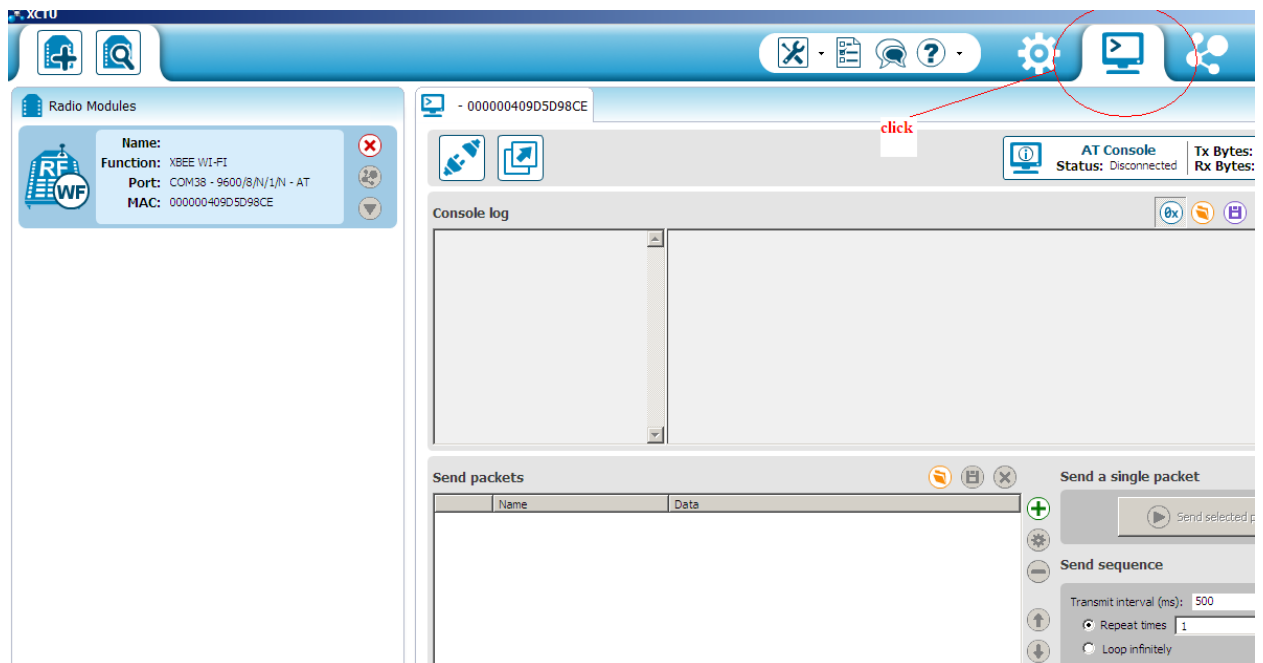
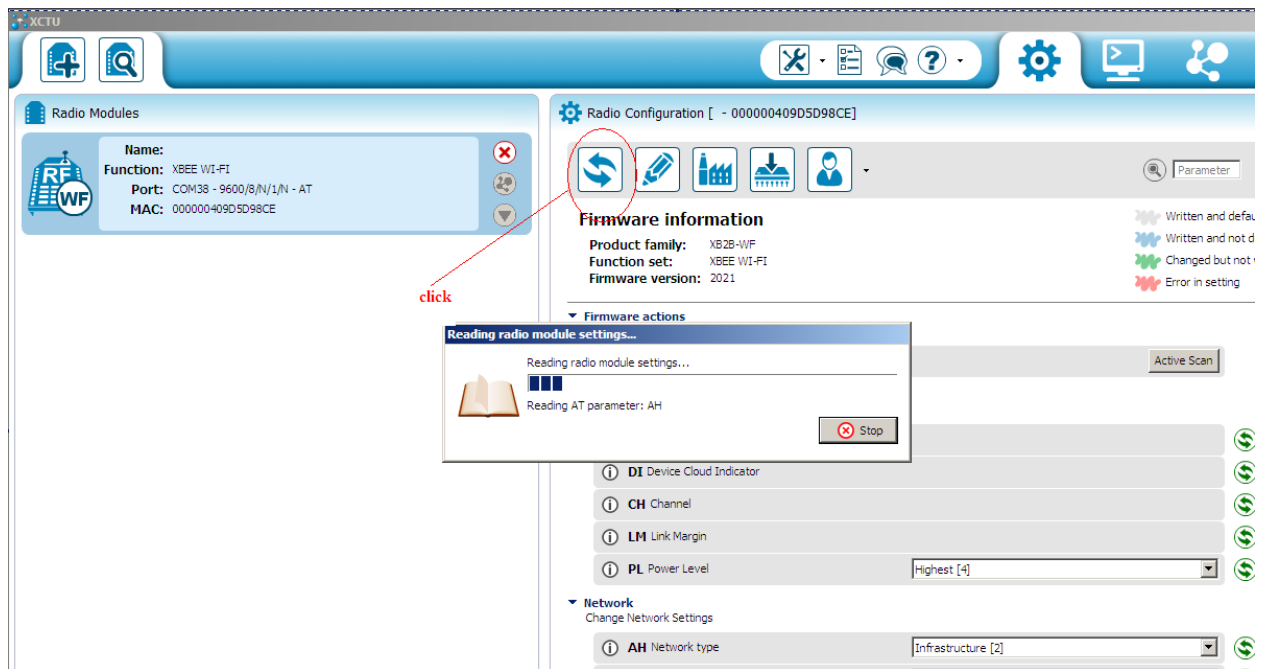
**Writing radio module settings...**

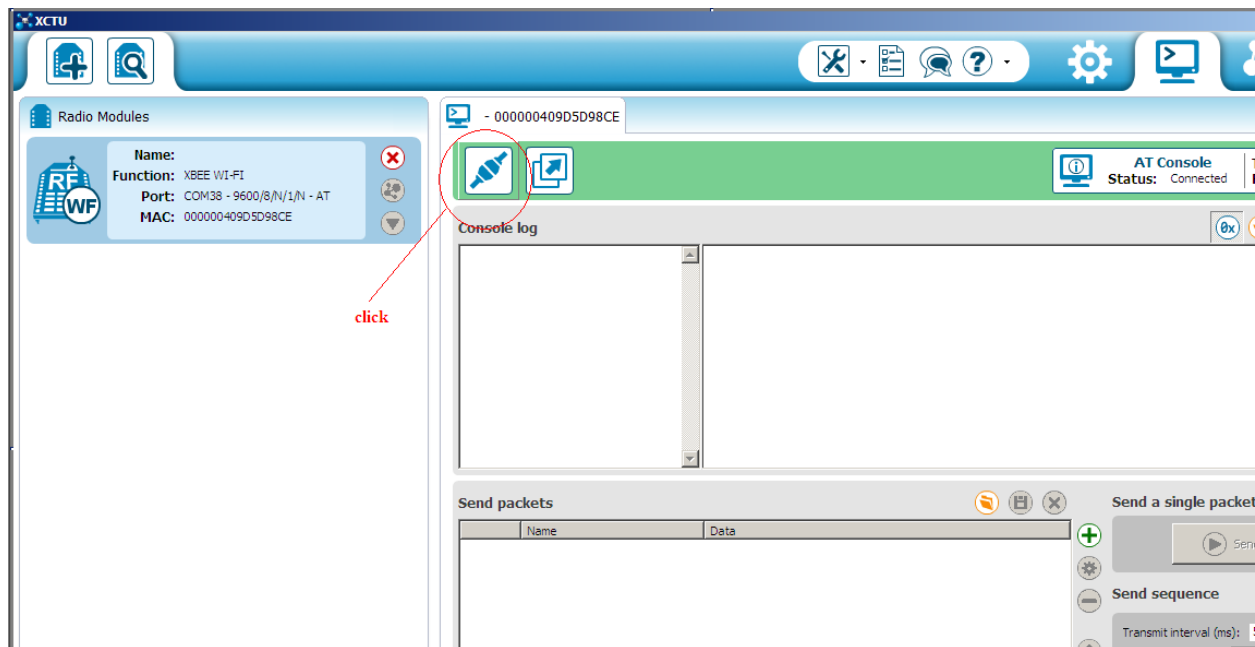
Writing radio module settings...  
 Entering command mode...  
 Stop

**DI** Device Cloud Indicator  
**CH** Channel  
**LM** Link Margin  
**PL** Power Level: Highest [4]

**Network**  
 Change Network Settings

**AH** Network type: Infrastructure [2]





In order to make sure the Soft AP mode working on the Xbee WiFi module. First, I search the WiFi with “RDL WIFI” SSID using my Android phone, and connect to it.



Click on connect