



28-12-2023 02:15:22 PM Preatreatment Oven

Zone 1 Temp[C]	Zone 2 Temp[C]	Zone 3 Temp[C]	Zone 4 Temp[C]
100	150	236	599
Pressure[Pa]	Gas[Kg]	Line Speed[M/S]	Power[kW]
3.6	150.46	15	800.56

www.rdltech.in

PROCESS PARAMETER MONITORING DISPLAY

Unit	Value	Unit	Value	Last Read Time
ZEL1000001	150	120	200	08:13:55 AM
ZEL1000002	200	180	300	08:12:50 AM
ZEL1000003	180	120	600	08:12:59 AM
ZEL1000004	200	220	300	08:13:30 AM
ZEL1000005	150	120	200	08:13:27 AM
ZEL1000006	180	120	200	08:20:28 AM
ZEL1000007	150	120	200	08:53:16 AM
ZEL1000008	150	120	200	08:47:00 AM
ZEL1000009	200	180	200	08:45:18 AM
ZEL1000010	180	120	200	08:53:39 AM





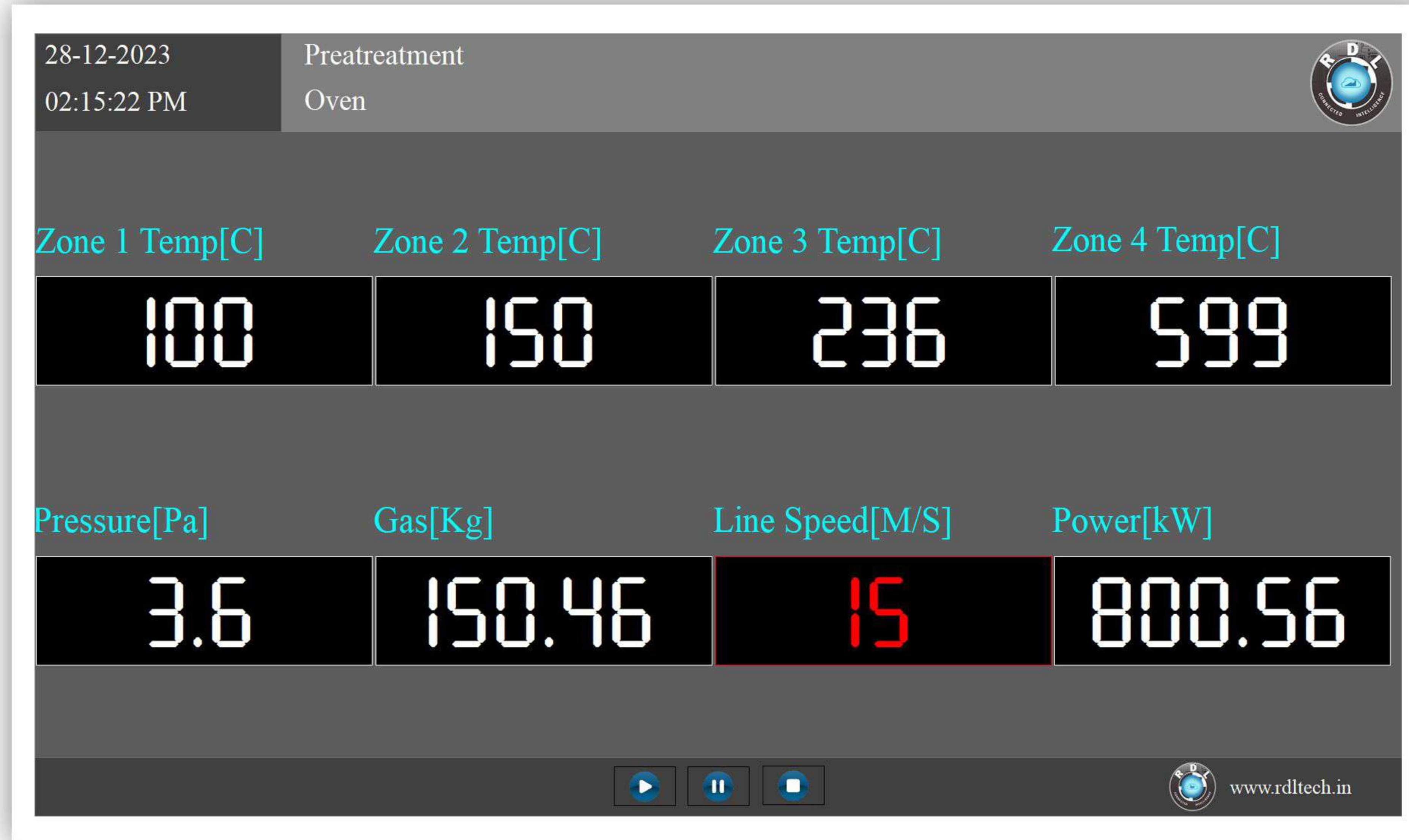
Critical process parameter display board specifically design to minimise unplanned downtime and maximise production by continuously collecting the key parameters of complex machines.

FEATURES

- 64x Custom configurable data channels.
- Custom configurable up to 8 dashboard screen.
- Custom configurable polling interval.
- Custom configurable color & alert settings.
- Datalogging and Report.
- Safety & instruction video can be played on set intervals.
- Windows 11 OEM Licence Enabled.
- In built industrial grade pc with processor 2.2Ghz , 4GB RAM, 120GB SSD.
- Industrial grade samsung Display.
- 12x Isolated Inbuilt 16 bit Analog input channel.
- 1x Isolated RS 485 RTU.
- 1x Isolated Modbus TCP.
- 4x Isolated Digital Input.

APPLICATION

- Production and process monitoring
- Utilities monitoring
- Condition monitorin
- Environment monitoring
- Industrial Smart grid
- Solar grid
- Cold storage monitoring
- Water treatment.
- Generator monitoring.
- Green House.
- Warning message in case of calamities.



- ← Modbus/OPC/Field Bus
- ← Analog Output
- ← Digital Output



- ← Modbus/OPC/Field Bus
- ← Analog Output
- ← Digital Output



- ← Modbus/OPC/Field Bus
- ← Analog Output
- ← Digital Output





SPECIFICATION

PRODUCT INFORMATION

Panel

• Model	: QE43T
• Display Size	: 42.5 inches
• Type	: Direct LED BLU
• Resolution	: UHD (3840 x 2160)
• Pixel Pitch (mm)	: 0.2451 x 0.2451
• Active Display Area	: 941.184 (H) x 529.416 (V)
• Brightness(Typ.)	: 300
• Contrast Ratio (Typ.)	: 4000:1
• Viewing Angle(H/V)	: 178/178
• Response Time (G to G)	: 8ms(Typ.)
• Display Colors	: 16.7M(True Display)
• Color Gamut	: (NTSC) 72%
• Operation Hour	: 16/7
• Haze	: 2%

Sound

• Speaker Type	: Built in Speaker(10W + 10W)
----------------	-------------------------------

Display

• Dynamic C/R	: MEGA
• H-Scanning Frequency	: 30 ~ 81kHz
• V-Scanning Frequency	: 48 ~ 75Hz
• Maximum Pixel Frequency	: 594MHz

Connectivity - Input

• RGB	: -
• VIDEO	: HDMI 2.0 (2).
• HDCP	: HDCP 2.2.
• AUDIO	: Stereo Mini Jack, HDMI/Audio (Common).
• USB	: USB 2.0 x 1.

Connectivity - Output

• RGB	: N/A
• VIDEO	: N/A
• AUDIO	: Stereo Mini Jack
• Power Out	: N/A
• USB	: N/A

• External Control	: RS232C(in) thru stereo jack, RJ45
• External Sensor	: N/A
• Tuner	: N/A



Power Consumption

• Max[W/h]	: 121
• Typical[W/h]	: 80
• Rating[W/h]	: 110
• BTU(Max)	: 412.6
• Sleep Mode	: 0.5
• Off Mode	: N/A

Mechanical Specification

• Dimension (mm) - Set	: 1260 x 730 x 140
• Dimension (mm) - Package	: 1350* x 770* x 155*
• Weight (kg) - Set	: 32
• Weight (kg) - Package	: 40
• VESA Mount	: 200 X 200
• Protection Glass	: N/A
• Stand Type	: Foot Stand (Optional)
• Bezel Width (Top/Side/Bot) (mm)	: 3 Bezel-less

Operation

• Operating Temperature	: 0°~ 40°
• Humidity	: 10~40%

Feature

• Key	: UHD Signage with Built-in MagicInfo Lite
• Orientation	: Landscape
• Special H/W	: Temperature Sensor, Clock Battery (168hrs Clock Keeping), Built in Speaker(10W 2ch), IP5x Rating.
• Special S/W	: Auto Source Switching & Recovery, LFD Home UI, Button Lock, Hot key option, Plug&Play (Initial Setting).

Internal Player (Embedded H/W)

• On-Chip Cache Memory	: L1 Instruction Cache : 48KB/L1 Data Cache : 32KB/L2 Cache : 2MB.
• Resolution	: 1920x1080
• Multimedia	: *Video Decoder : MPEG-1/2/4, H.263, H.264/AVC, UHD H.264/AVC, VC-1, AVS+, HEVC, JPEG, PNG, VP8, VP9 *Audio Decoder : AC3 (DD), MPEG.
• IO Ports	: USB 2.0.

Certification

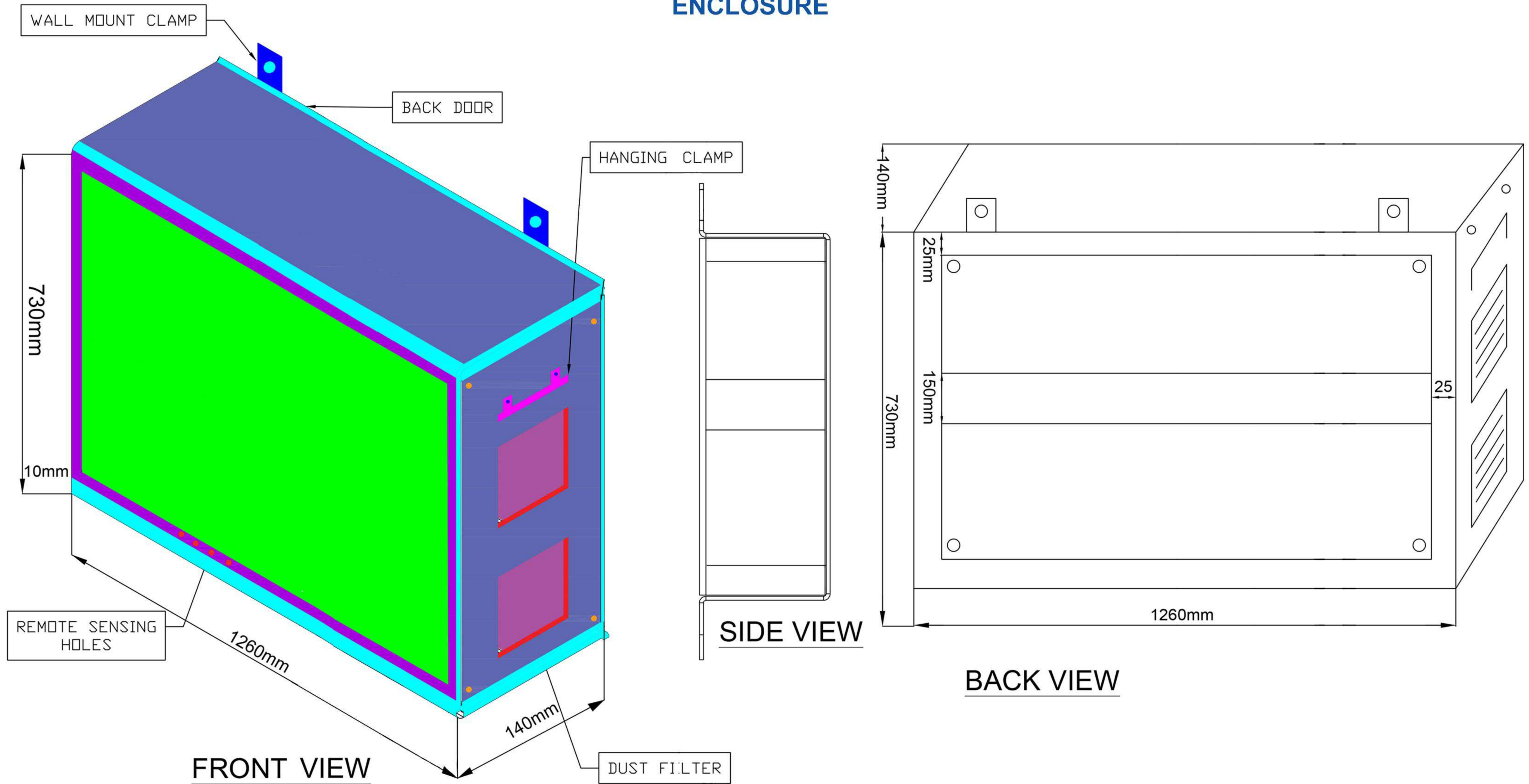
• Safety : 60950-1	• EMC : Class B	• Environment : N/A
--------------------	-----------------	---------------------

Accessories

• Included	: Quick Setup Guide, Warranty Card, Power Cord, Remote Controller, Batteries.
------------	---



ENCLOSURE





Note:

1. Unless otherwise specified, all parameters in this datasheet were measured at 25°C and 75% humidity.
2. All index testing procedures in this datasheet are based on our company's corporate standards.
3. We can offer product customization; please contact the sales team directly for more information.
4. Specifications are subject to change without prior notice:
5. For additional information on Product please refer to www.rdltech.in
5. Buy online @ www.researchdesignlab.com

RDL Technologies Pvt Ltd

Address: 5th Floor, Sahyadri Campus, Adyar, Mangaluru – 575007

Mob: +91 8088423347

Tel: +91 824 2988407

Email: sales@rdltech.in

www.rdltech.in