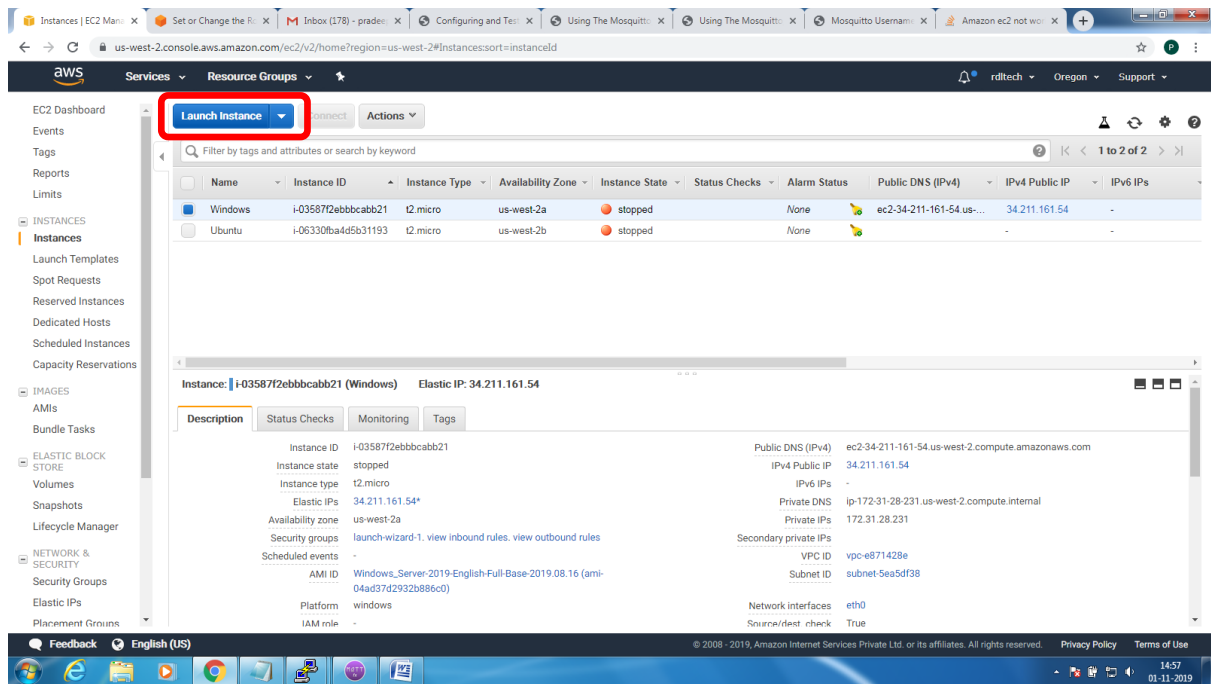


Steps to configure and bring up Mosquitto MQTT Broker on AWS EC2/Linux

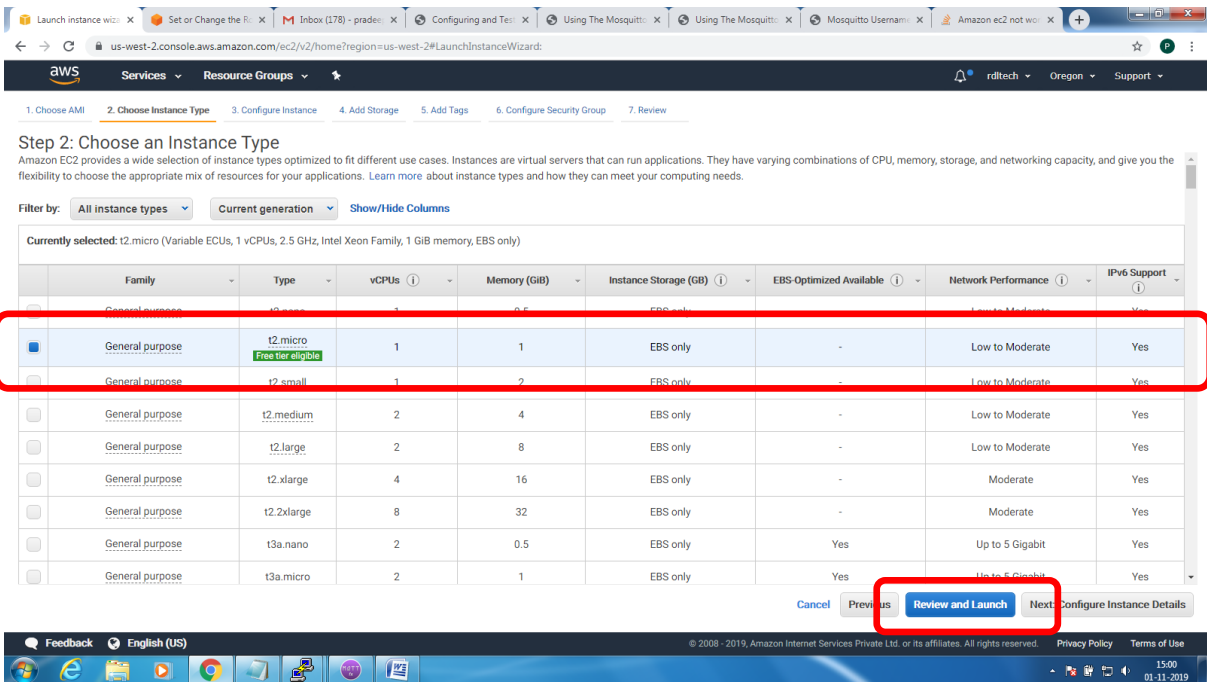
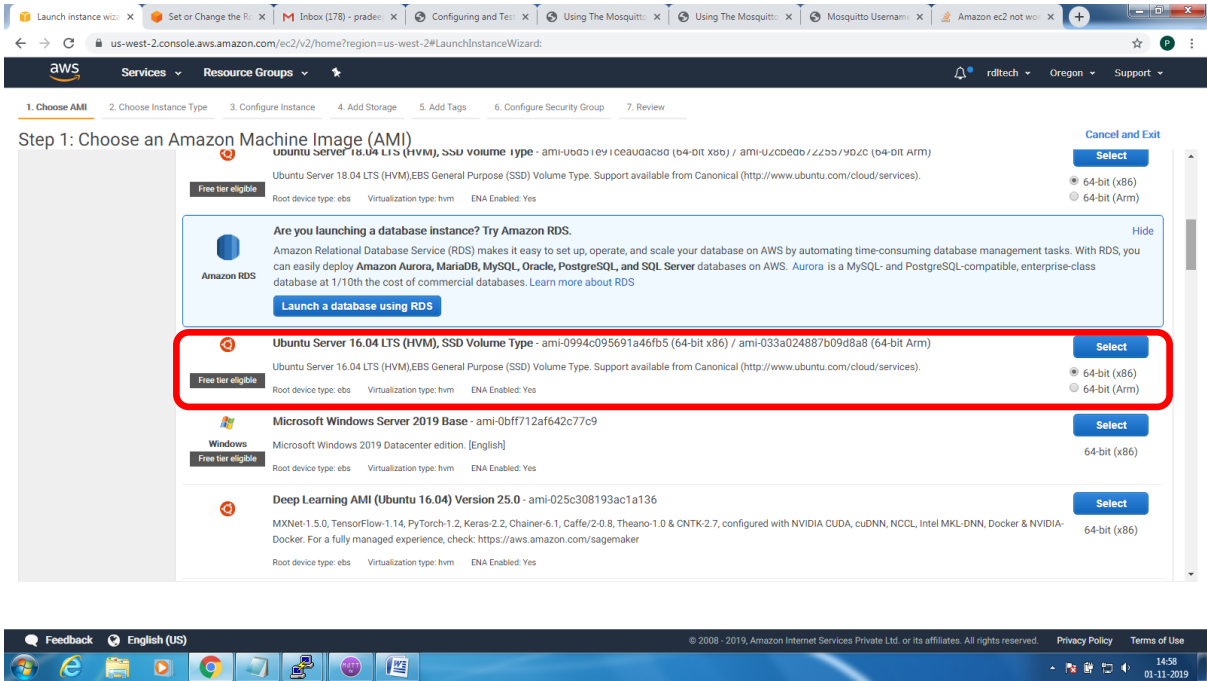
Mainly 2 steps

1. Bring up EC2 Linux System
2. Install mosquitto on the above system

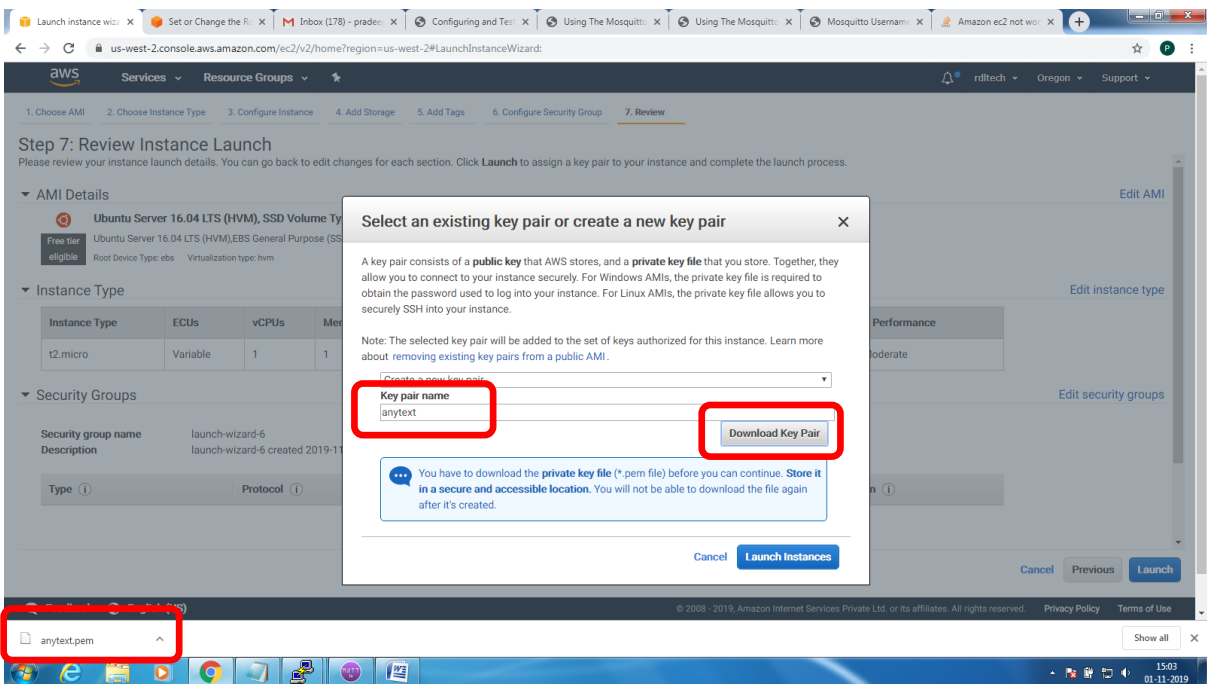
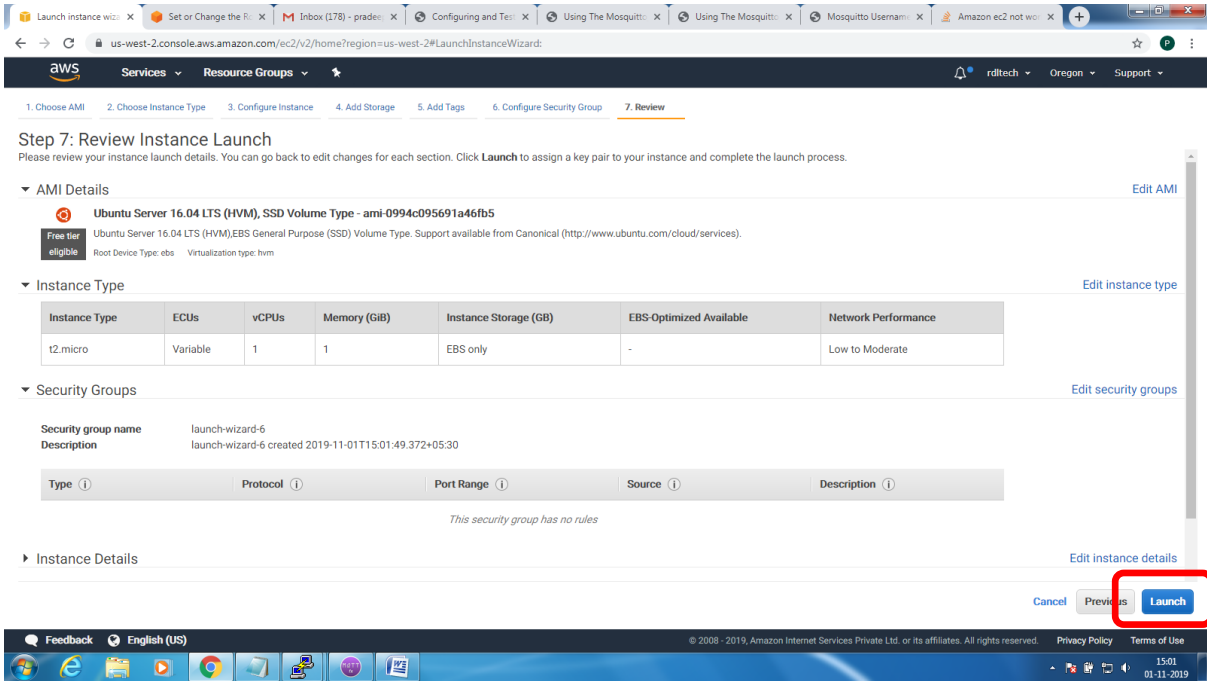
Bring up EC2 Linux System



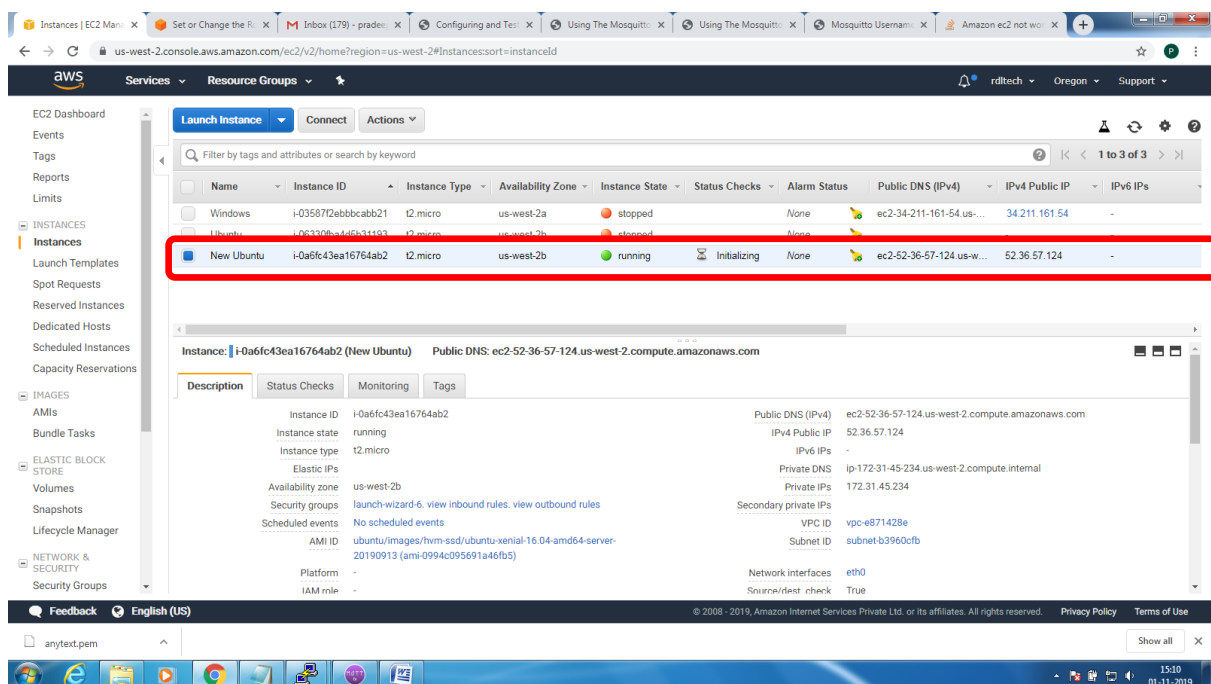
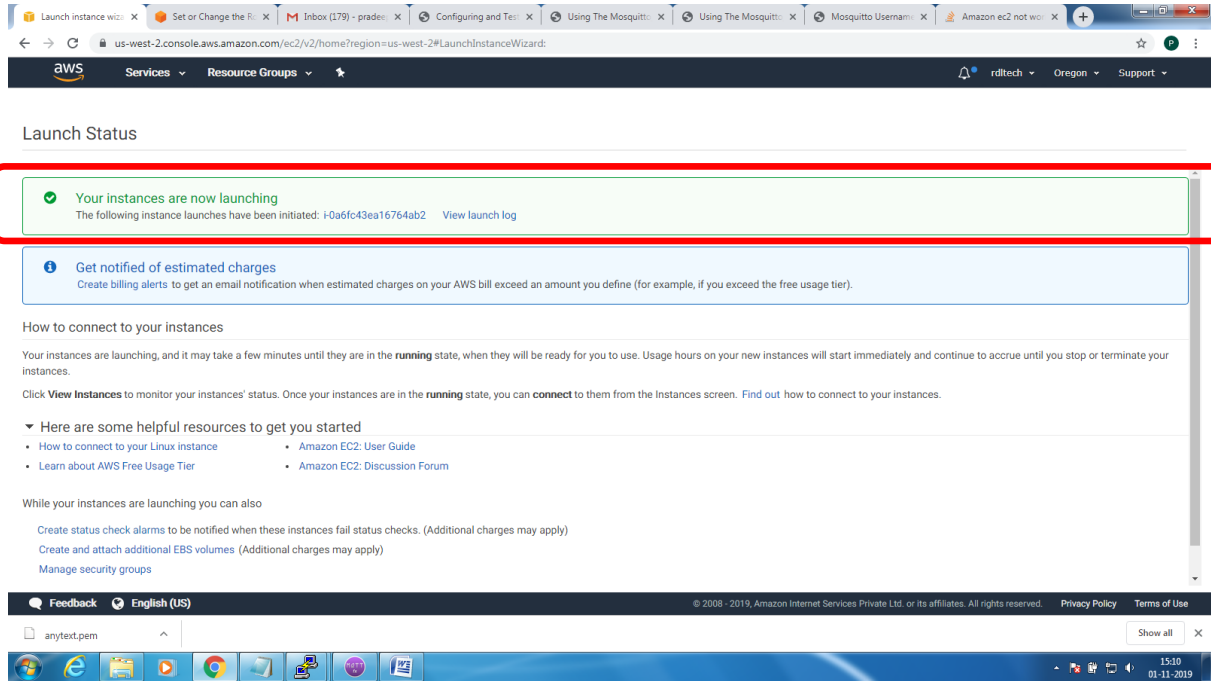
MQTT Broker Installation and Configuration Guideline V1.0



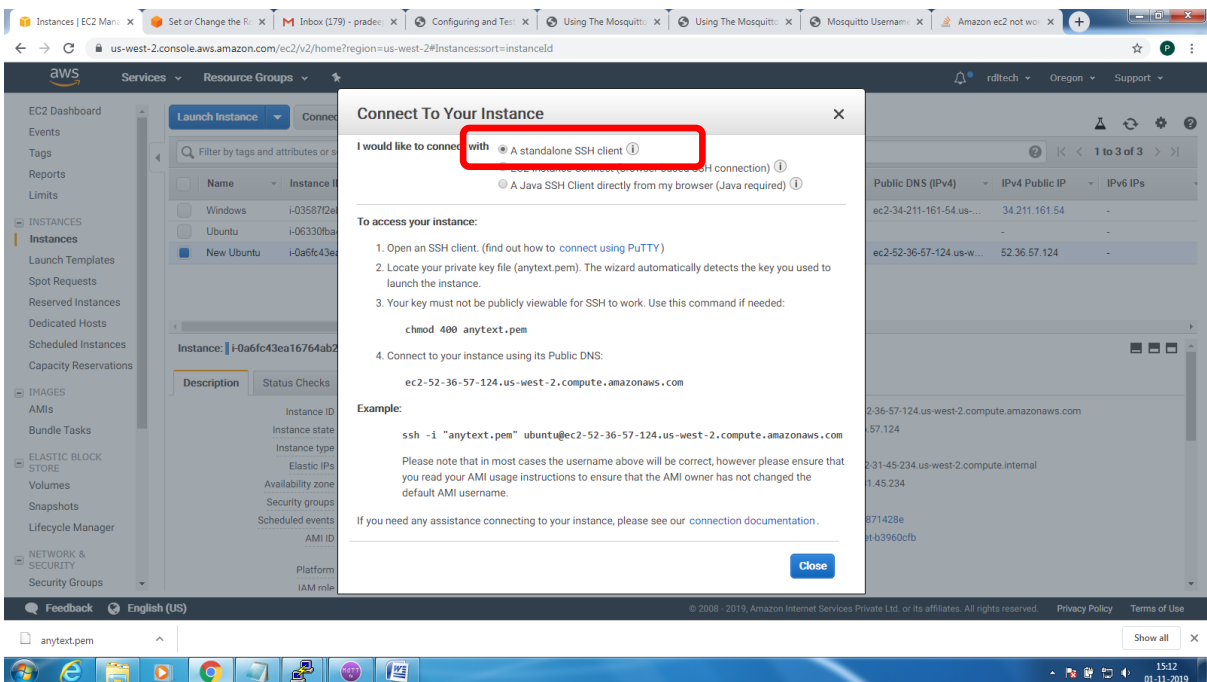
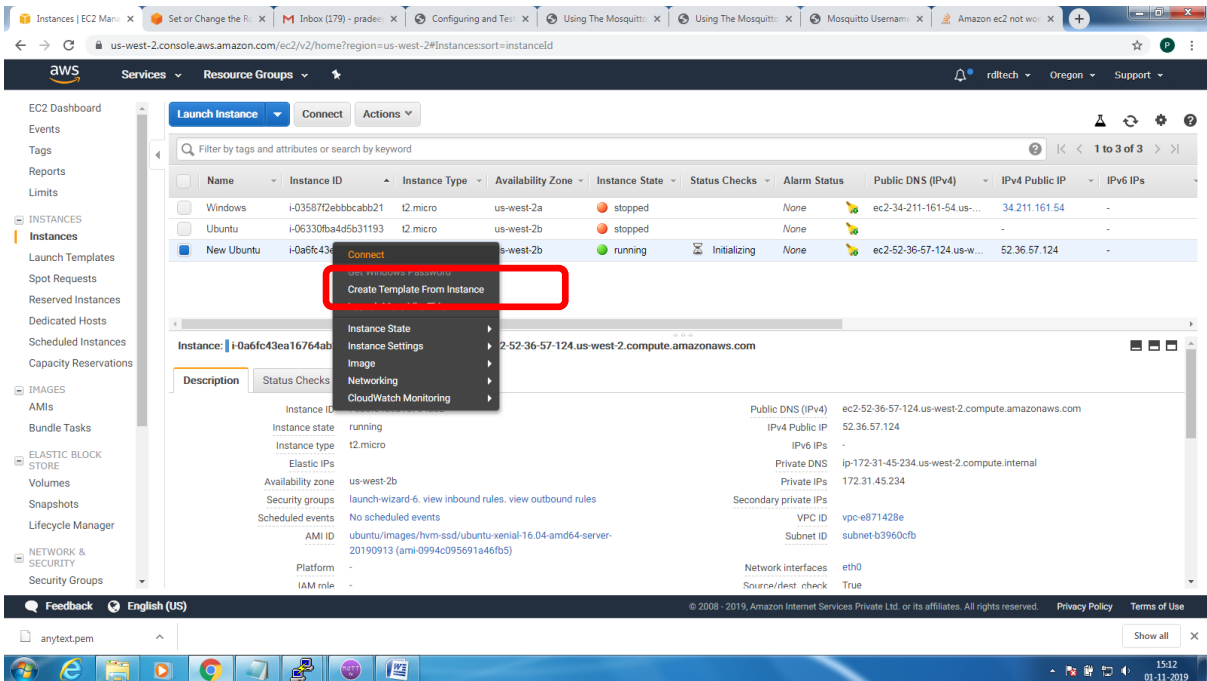
MQTT Broker Installation and Configuration Guideline V1.0



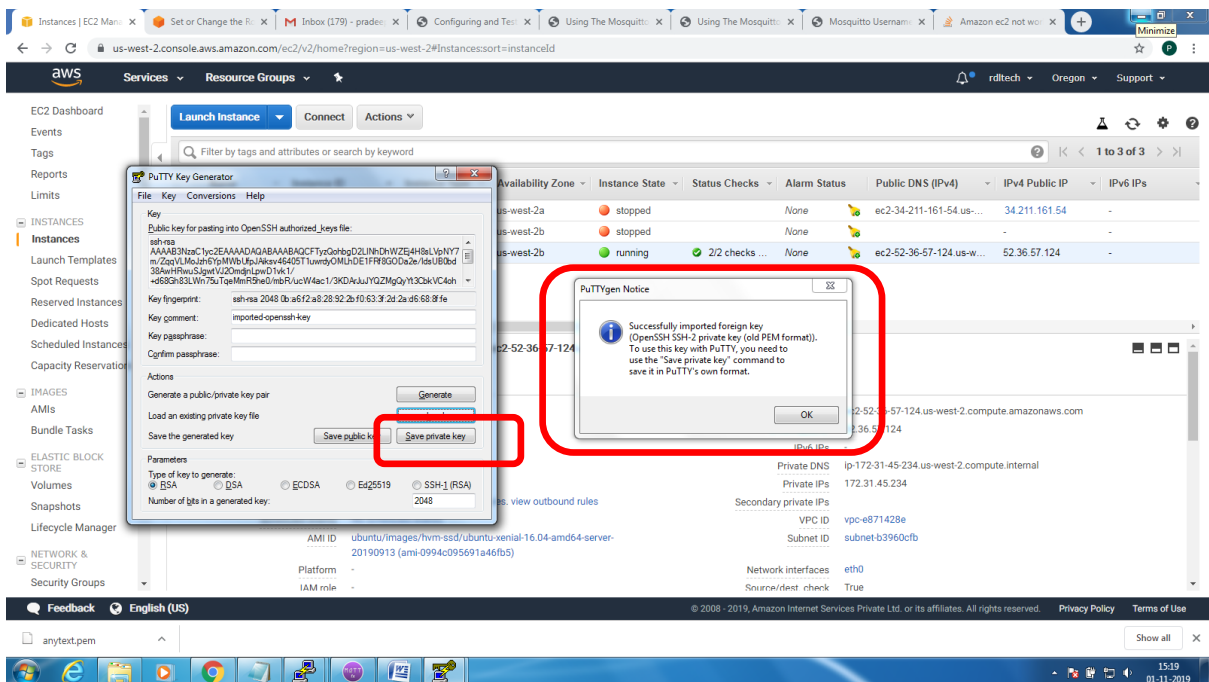
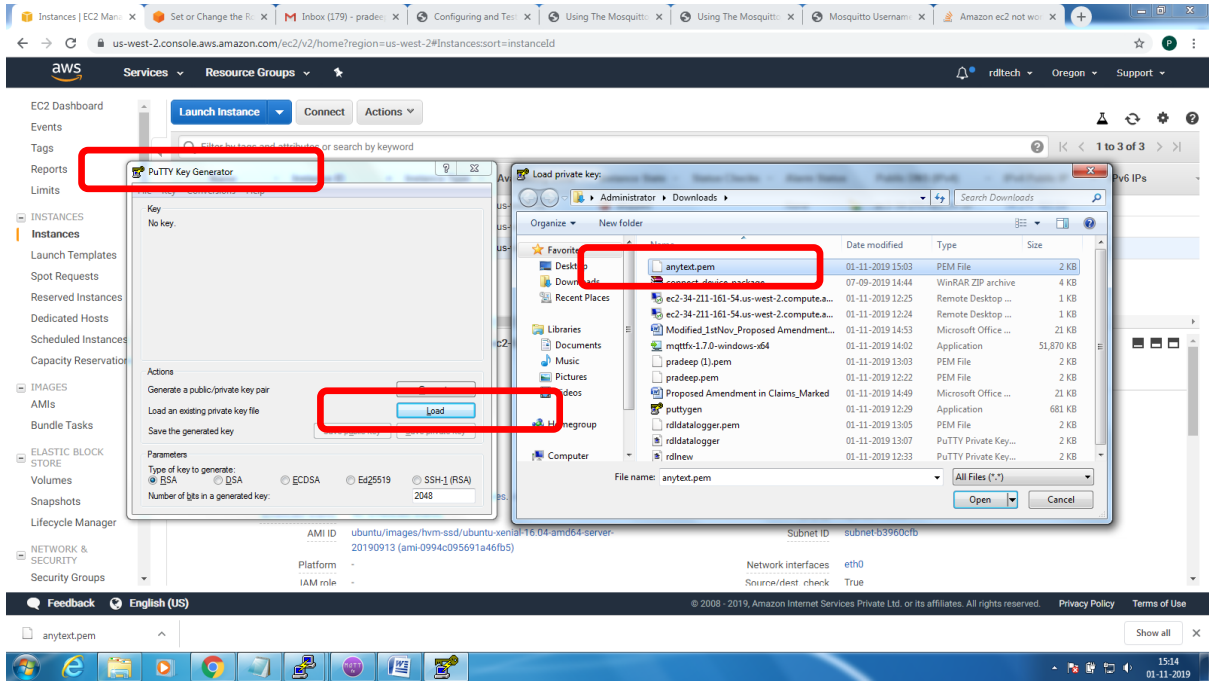
MQTT Broker Installation and Configuration Guideline V1.0



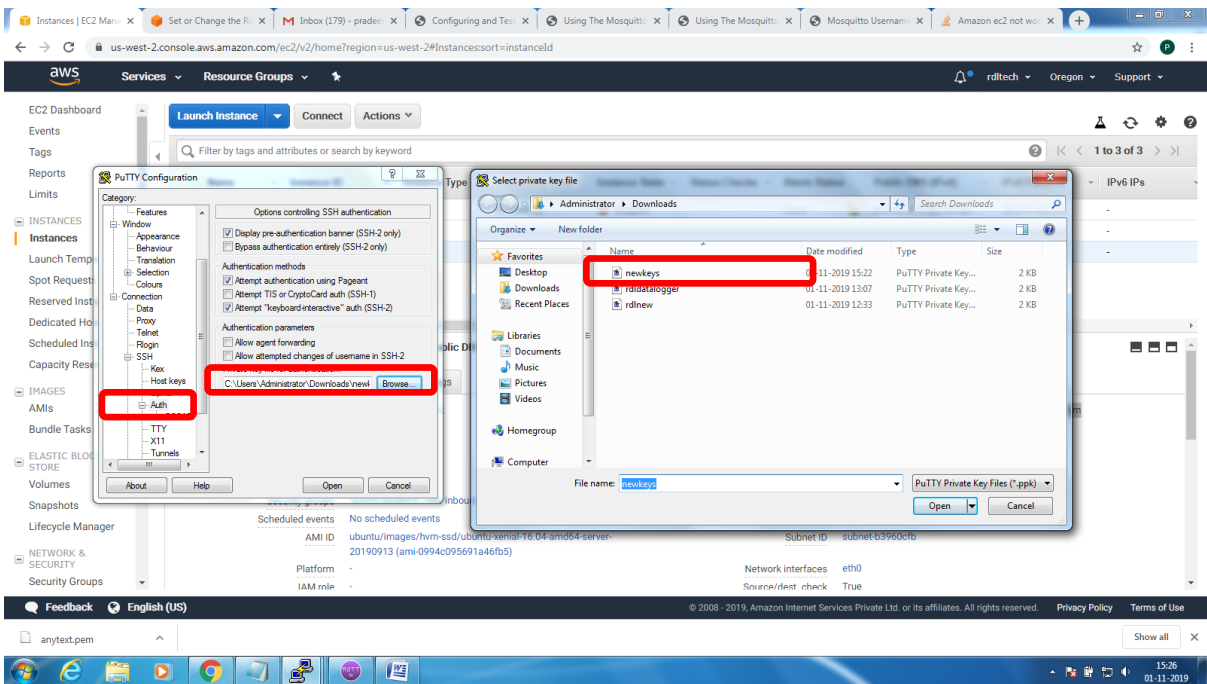
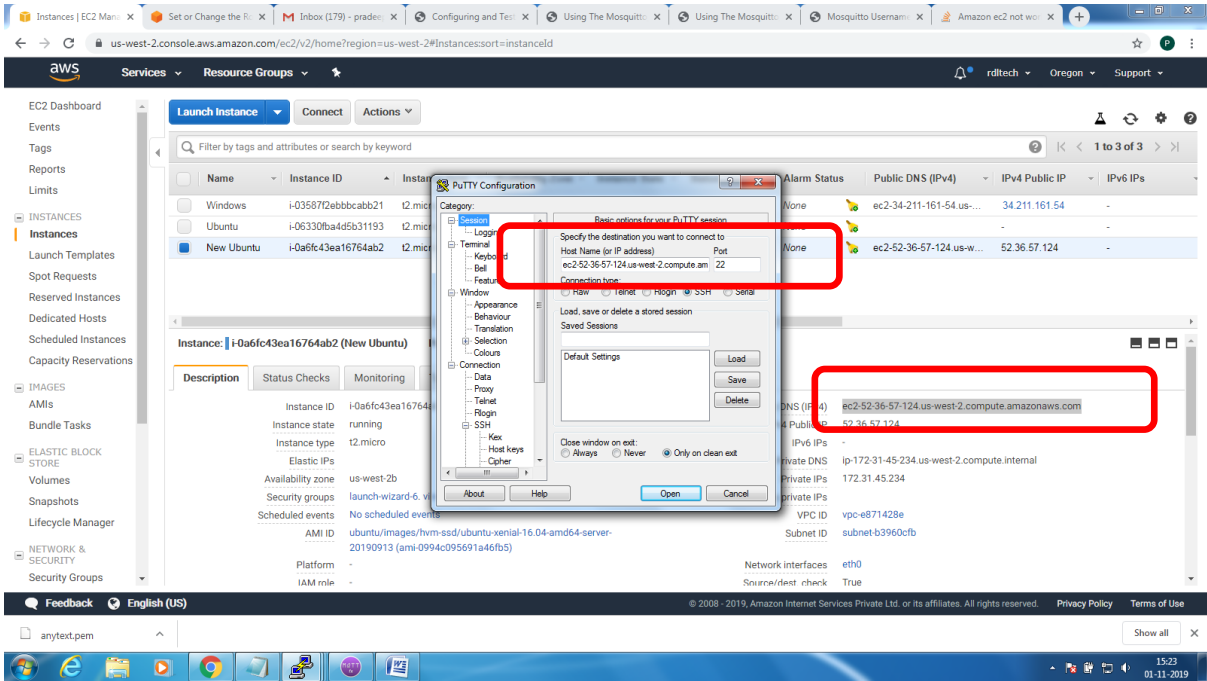
MQTT Broker Installation and Configuration Guideline V1.0

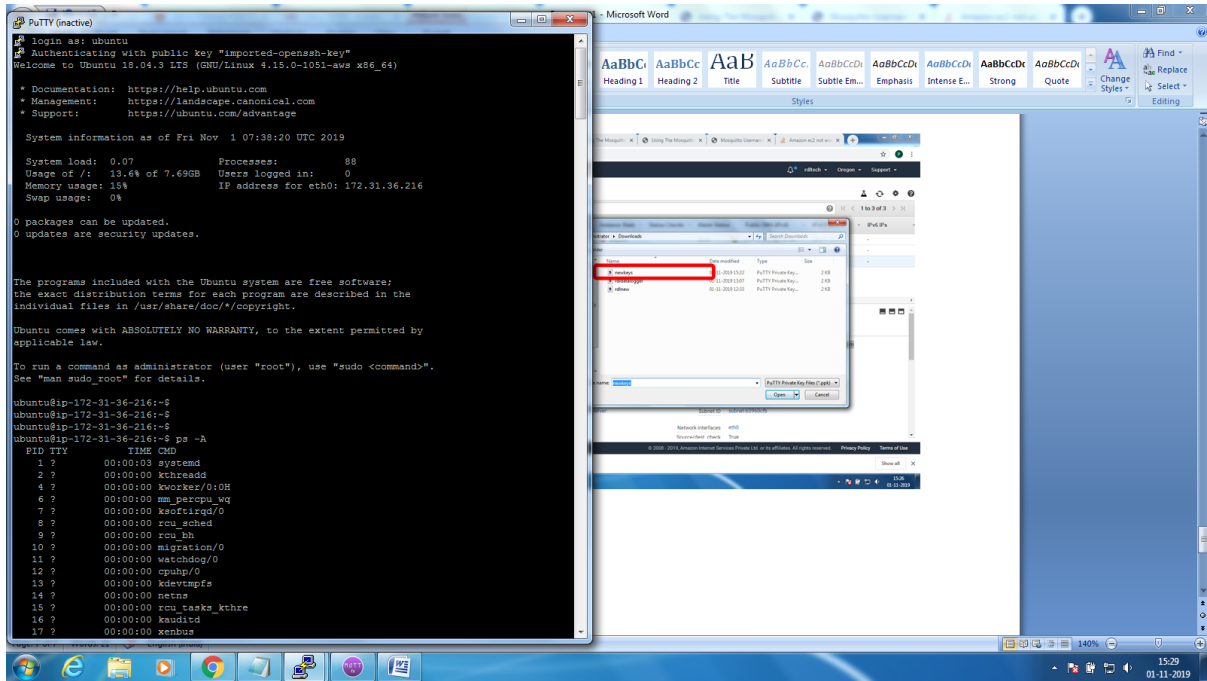


MQTT Broker Installation and Configuration Guideline V1.0



MQTT Broker Installation and Configuration Guideline V1.0





Installation of **mosquitto** on linux system

Follow the below steps to install mosquitto

1. `sudo apt-add-repository ppa:mosquitto-dev/mosquitto-ppa`
2. `sudo apt-get update`
3. `sudo apt-get install mosquitto`
4. `sudo apt-get install mosquitto-clients`

Follow the below steps to Enable user authentication

- Create a txt file in the following format
- Username:Password
- Issue the following commands to add certificate to this file
- `mosquitto_passwd -U passwordfile (text file name)`
- Copy this file to `/etc/mosquitto`

Open **mosquito.conf** and add these 2 lines to enable user authentication

```
allow_anonymous false
password_file etc/mosquitto/passwords.txt
```

Restart the broker to absorb the changes


```
ubuntu@ip-172-31-36-216:~$ mosquitto -v
1572603369: mosquitto version 1.6.7 starting
1572603369: Using default config.
1572603369: Opening ipv4 listen socket on port 1883.
1572603369: Error: Address already in use
```

To resolve this

```
ps -ef | grep mosquitto
```

```
kill -9 pid
```

```
mosquitto_sub -t '$SYS/#' -v
```

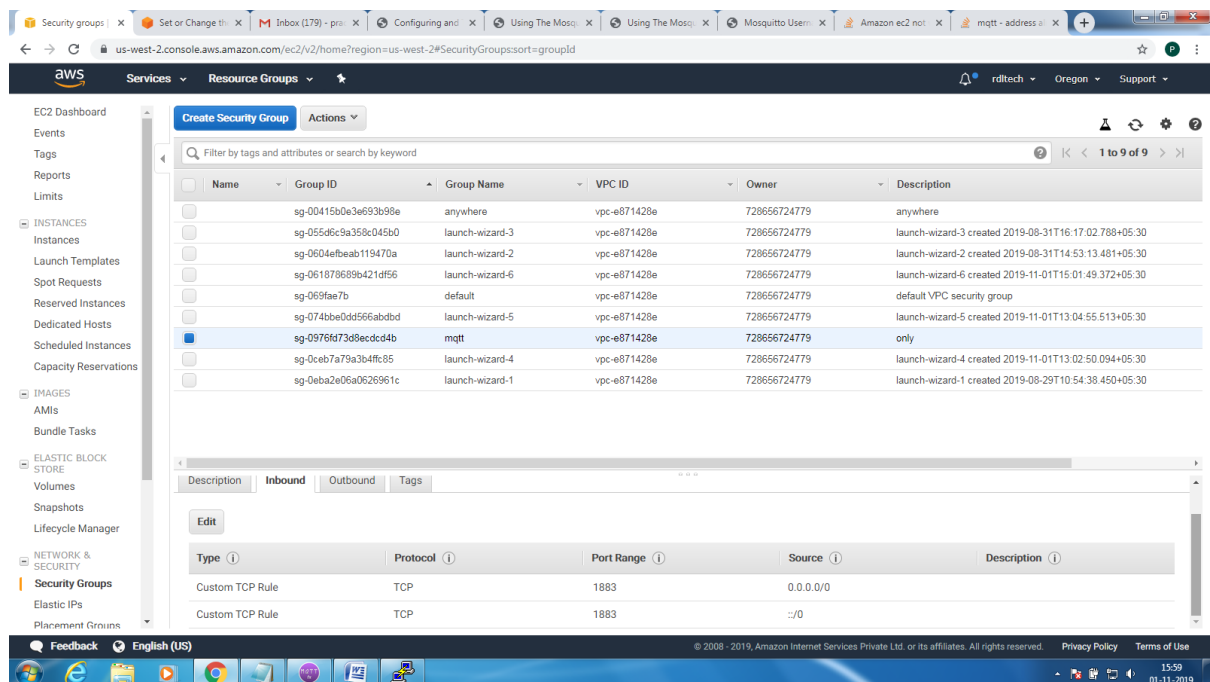
or

```
root@ip-172-31-36-216:/home/ubuntu# mosquitto
```

```
1572603616: mosquitto version 1.6.7 starting
1572603616: Using default config.
1572603616: Opening ipv4 listen socket on port 1883.
1572603616: Opening ipv6 listen socket on port 1883.
```

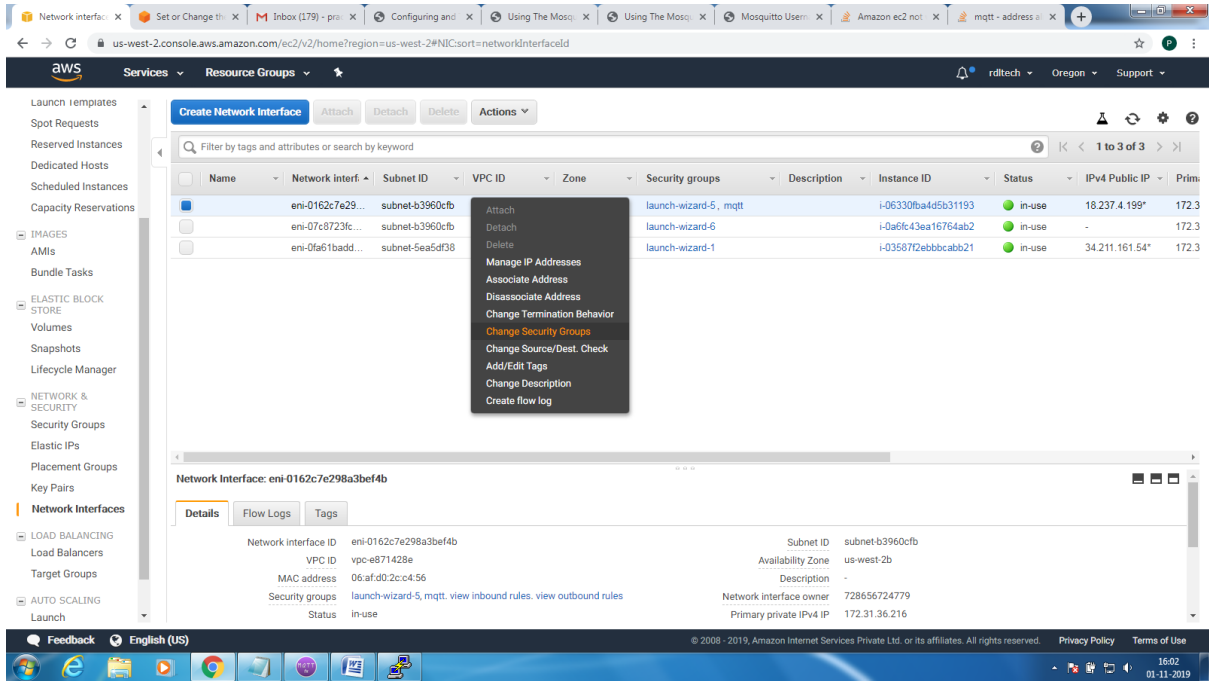
To enable Message flow on to AWS ES2 system, follow the below steps

Create Security Group to allow TCP/1883 traffic in the inbound direction

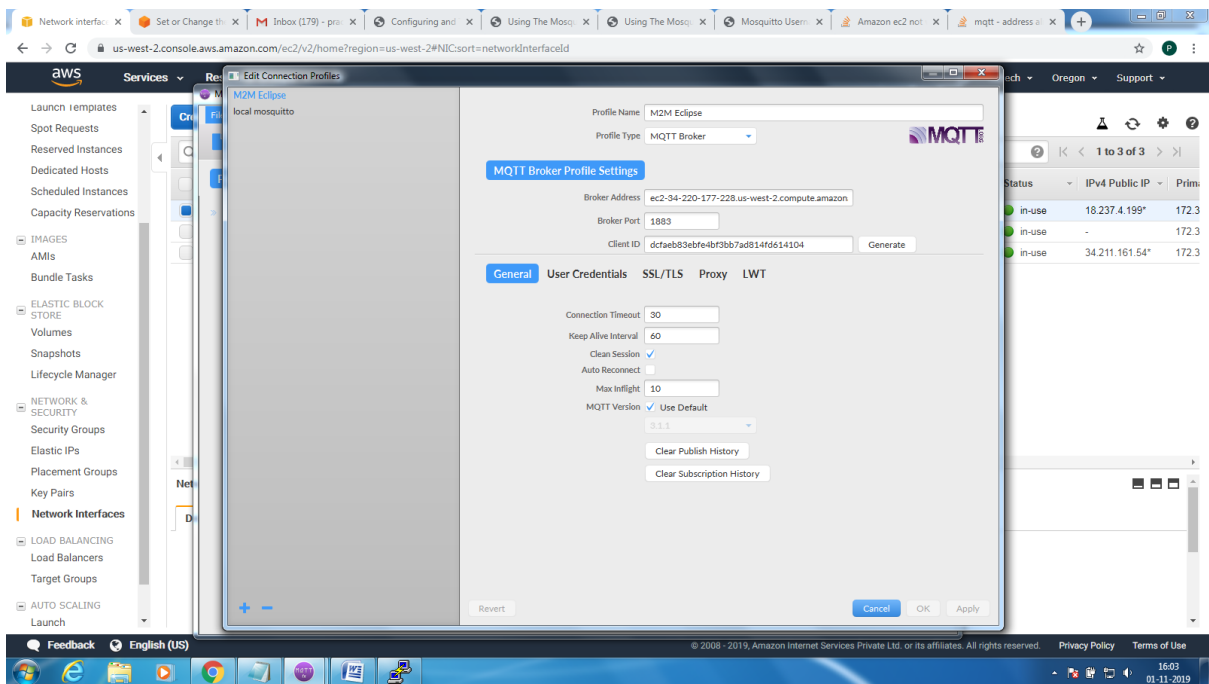


Add the Security Group to the Next Interface associated to the EC2 resource

MQTT Broker Installation and Configuration Guideline V1.0

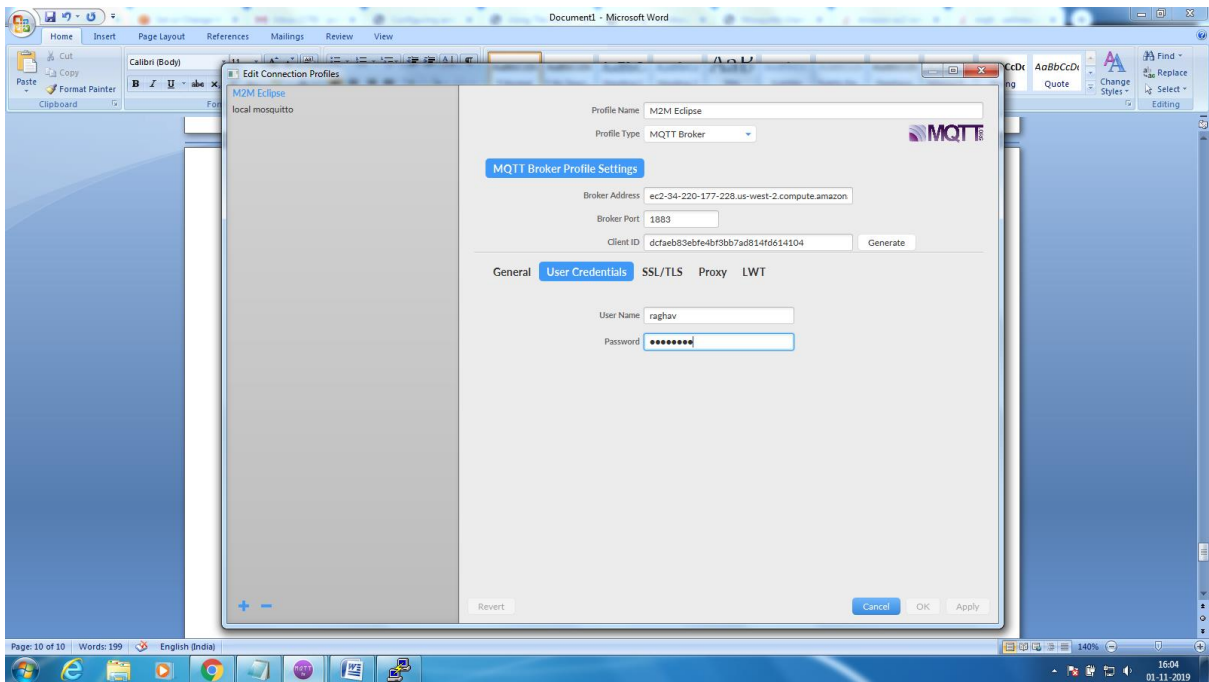


On MQTTx client, include Public domain IP4 address as Broker Address



Provide user credentials configured in the password.txt on the MQTT broker

MQTT Broker Installation and Configuration Guideline V1.0



The bring up is now complete, topic could be subscribed and publish on the MQTTfx client