

MINI ARM BOARD- LPC2148

Table of Contents

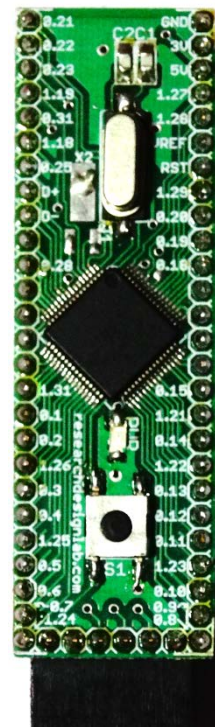
OVERVIEW	3
FEATURES	3
PIN CONFIGURATION	4
Software	5
BURNING THE CODE IN PHILIPS FLASH UTILITY SOFTWARE	5
CODE	8

OVERVIEW

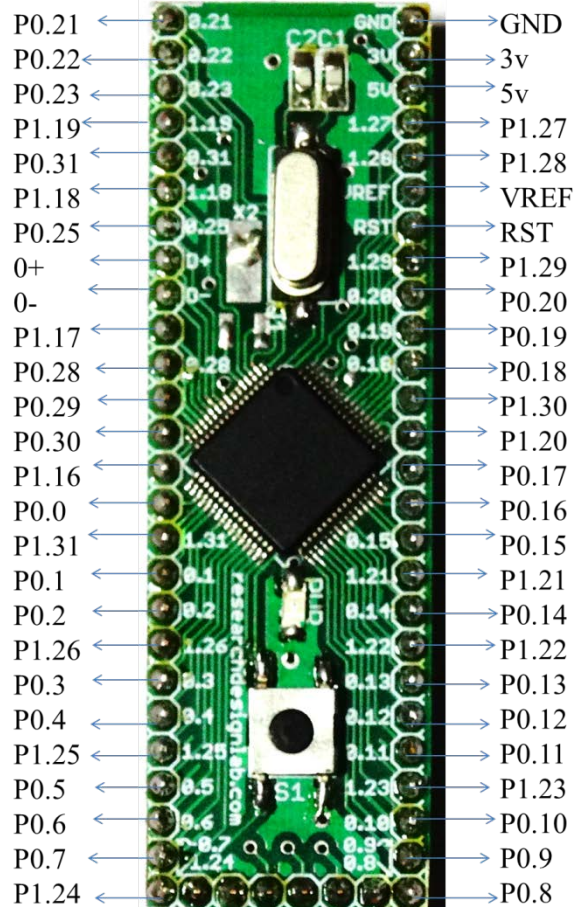
LPC2148 is a single-chip 32-bit microcontroller with 256KB on-chip Flash ROM with In-System Programming (ISP) and In-Application Programming (IAP) 16KB RAM having Real Time Clock, Watchdog Timer, General purpose I/O pins. CPU clock up to 60 MHz, On-chip crystal oscillator and On-chip PLL. This IC also supports Interrupt Controller, 2 SPI serial interfaces, Two UARTs, I2C serial interface, PWM unit with up to 6 PWM outputs, Two timers (7 capture/compare channels), 4-channels 10bit ADC, 2 CAN channels.

FEATURES

- Includes NXP LPC 2148 Microcontroller.
- On Board Power LED Indicator.
- On Board 12 MHz Crystal Oscillator.
- On Board 3.3V Regulator.
- On Board 1.8V Regulator.
- All Port Pins available at Berge Strip.
- Includes FT232 Breakout Board.
- High quality PCB FR4 Grade with FPT Certified.



PIN CONFIGURATION



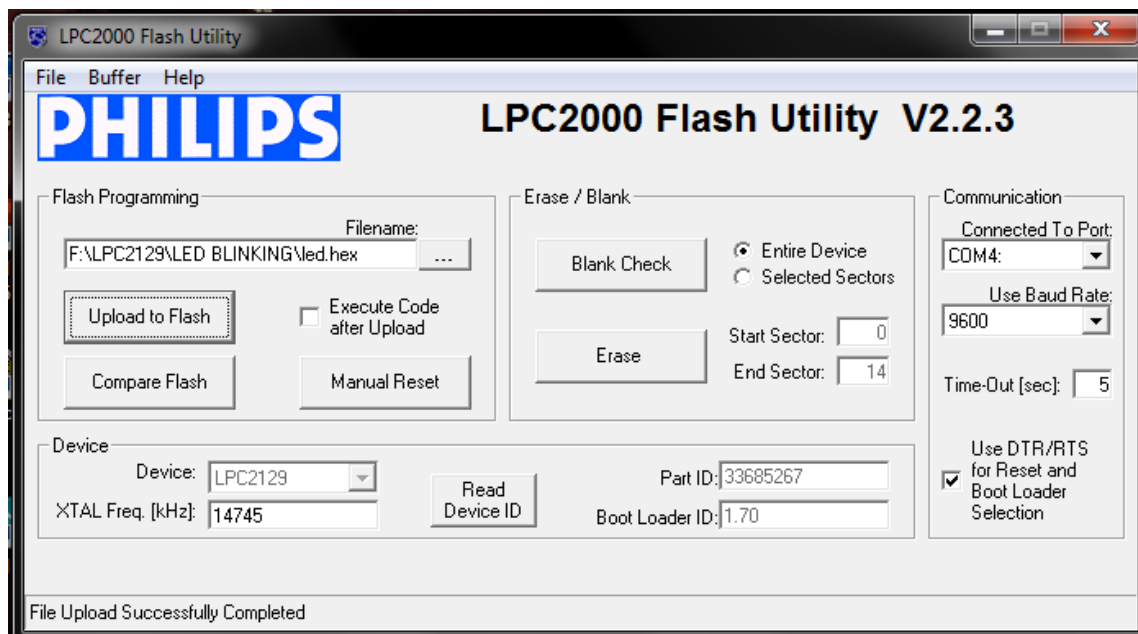
Software

<https://drive.google.com/folderview?id=0BzrGD4zr88GnMTZiOFEzYWJhcUE&usp=sharing#>

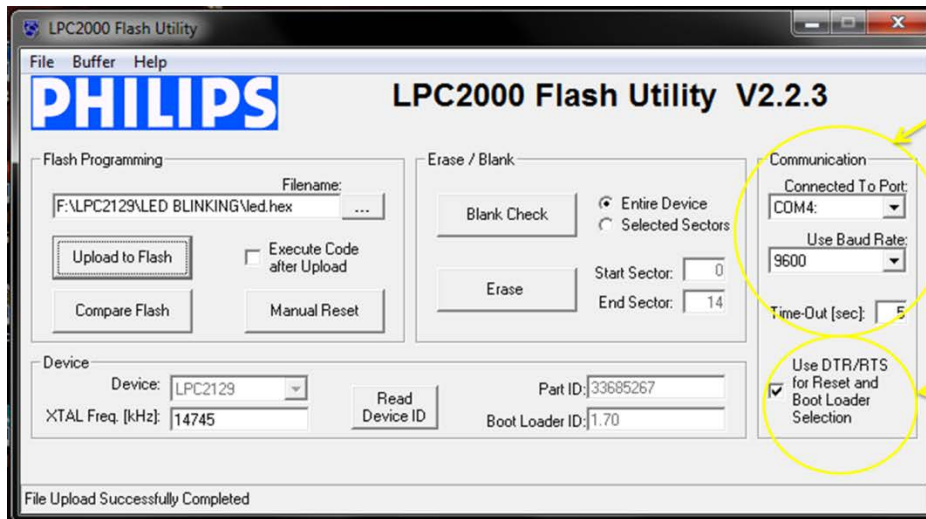
- download the Philips Flash Utility software
- download LPC2129 folder for programs

BURNING THE CODE IN PHILIPS FLASH UTILITY SOFTWARE

- open the Philips utility software

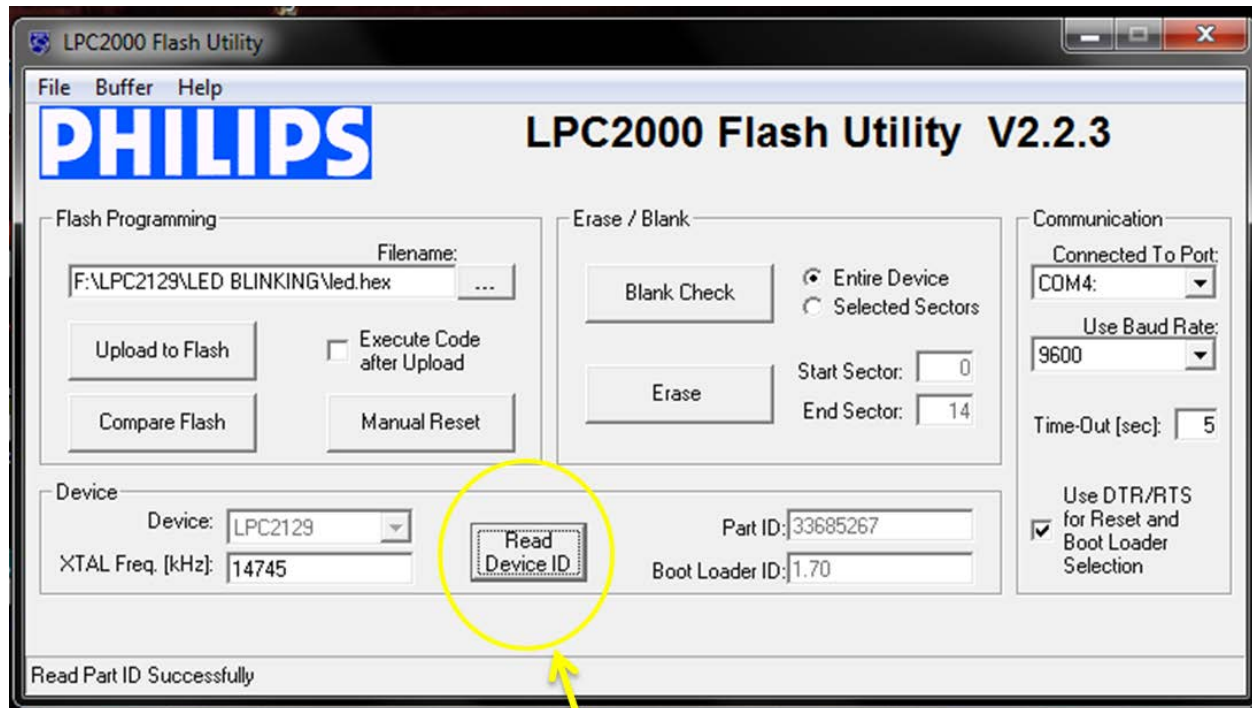


- go to device manager and set the com port to com 4 or anything less than that because in Philips software we can select com from 1 to 5 only

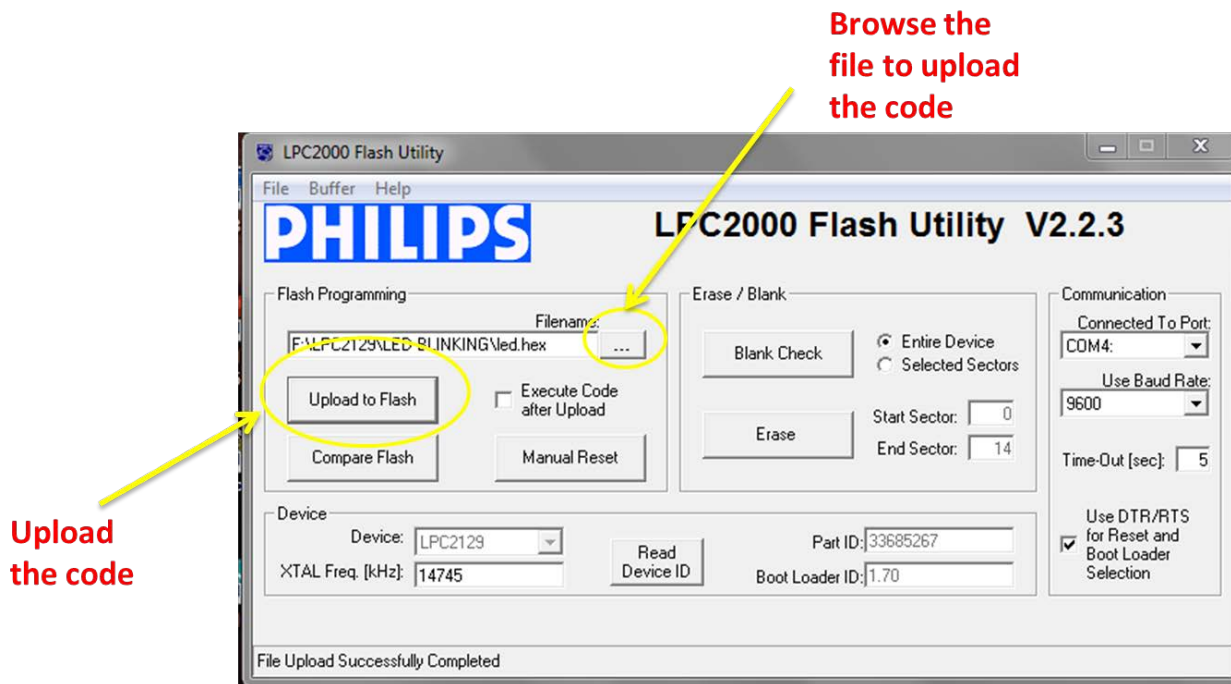


Select the com
which you have
set and select
baud rate as
9600

Tick this box



**Click on Read device to
check if the arm is
connected properly or
not**



CODE

- LED blinking
<http://researchdesignlab.com/arm-lpc2129-ledblink-code.html>
- 7 segment
<http://researchdesignlab.com/arm-lpc2129-7segment-code.html>
- LCD
<http://researchdesignlab.com/arm-lpc2129-lcd-code.html>
- Keypad
<http://researchdesignlab.com/arm-lpc2129-keypad-code.html>
- UART
<http://researchdesignlab.com/arm-lpc2129-uart-code.html>
- ADC
<http://researchdesignlab.com/arm-lpc2129-adc-code.html>