



# ARM DEVELOPMENT BOARD- LPC2129/LPC2148



## Table of Contents

OVERVIEW .....	3
FEATURES .....	3
CONNECTIONS .....	4
Software .....	5
BURNING THE CODE IN PHILIPS FLASH UTILITY SOFTWARE .....	6
CODE .....	9



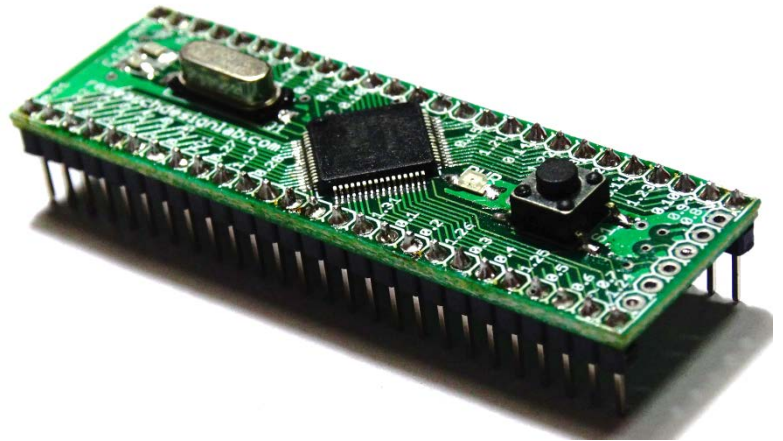
## OVERVIEW

LPC2129/LPC2148 is a single-chip 32-bit microcontroller with 256KB on-chip Flash ROM with In-System Programming (ISP) and In-Application Programming (IAP) 16KB RAM having Real Time Clock, Watchdog Timer, General purpose I/O pins. CPU clock up to 60 MHz, On-chip crystal oscillator and On-chip PLL.

This IC also supports Interrupt Controller, 2 SPI serial interfaces, Two UARTs, I2C serial interface, PWM unit with up to 6 PWM outputs, Two timers (7 capture/compare channels), 4-channels 10bit ADC, 2 CAN channels.

## FEATURES

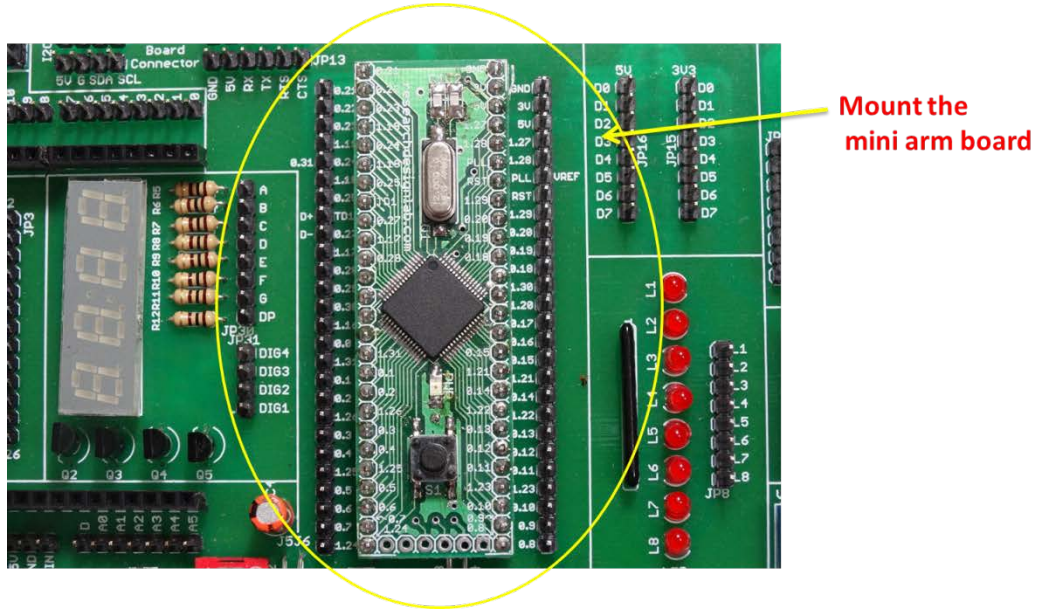
- On Board Power LED Indicator.
- On Board 12 MHz Crystal Oscillator.
- On Board 3.3V Regulator.
- On Board 1.8V Regulator.
- All Port Pins available at Berge Strip.
- Includes FT232 Breakout Board.
- High quality PCB FR4 Grade with FPT Certified.



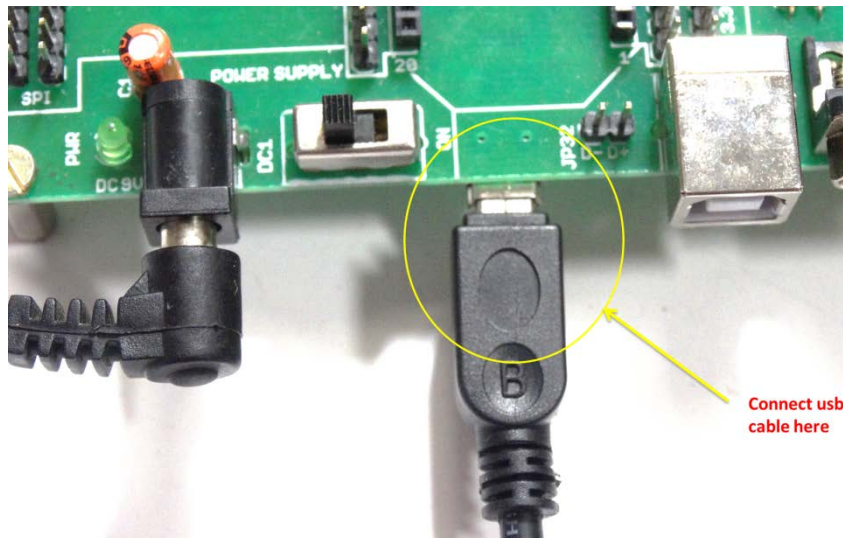


## CONNECTIONS

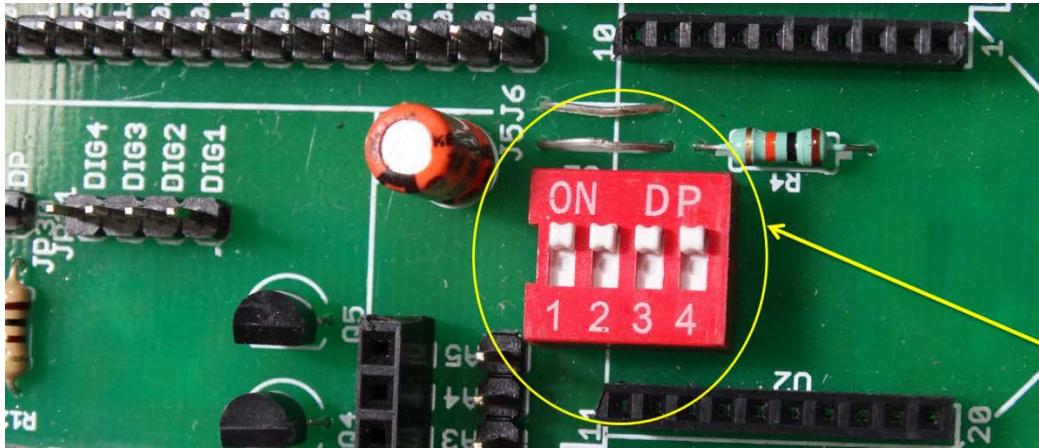
- Mount the arm mini board as shown in pic



- 
- Connect the USB cable as shown in the fig.



- make DIP Switch High



Make the dip switch on before burnig the program

## Software

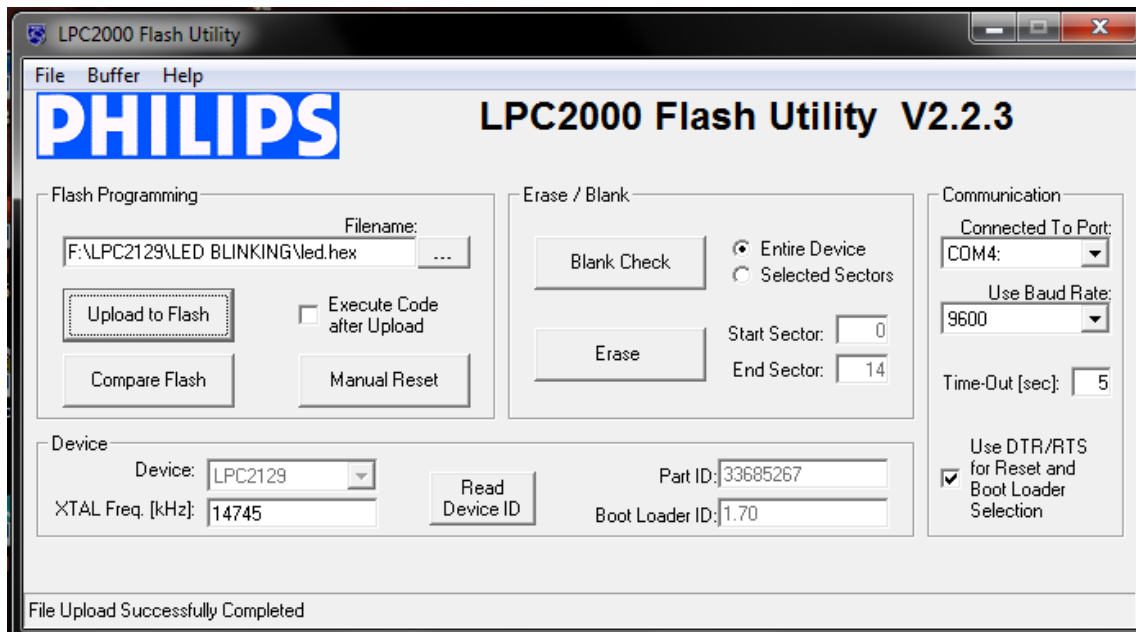
<https://drive.google.com/folderview?id=0BzrGD4zr88GnMTziOFzYVWJhcUE&usp=sharing#>

- download the Philips Flash Utility software
- download LPC2129 folder for programs

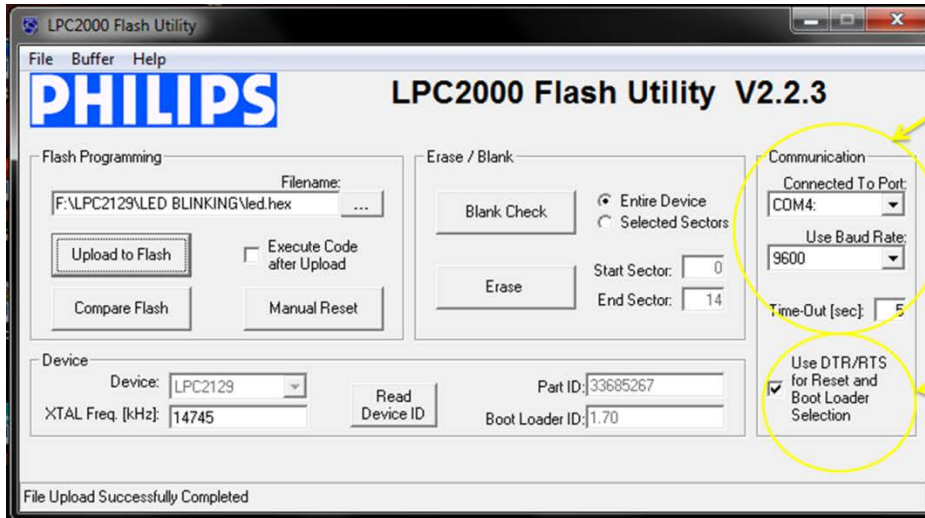


## BURNING THE CODE IN PHILIPS FLASH UTILITY SOFTWARE

- open the Philips utility software



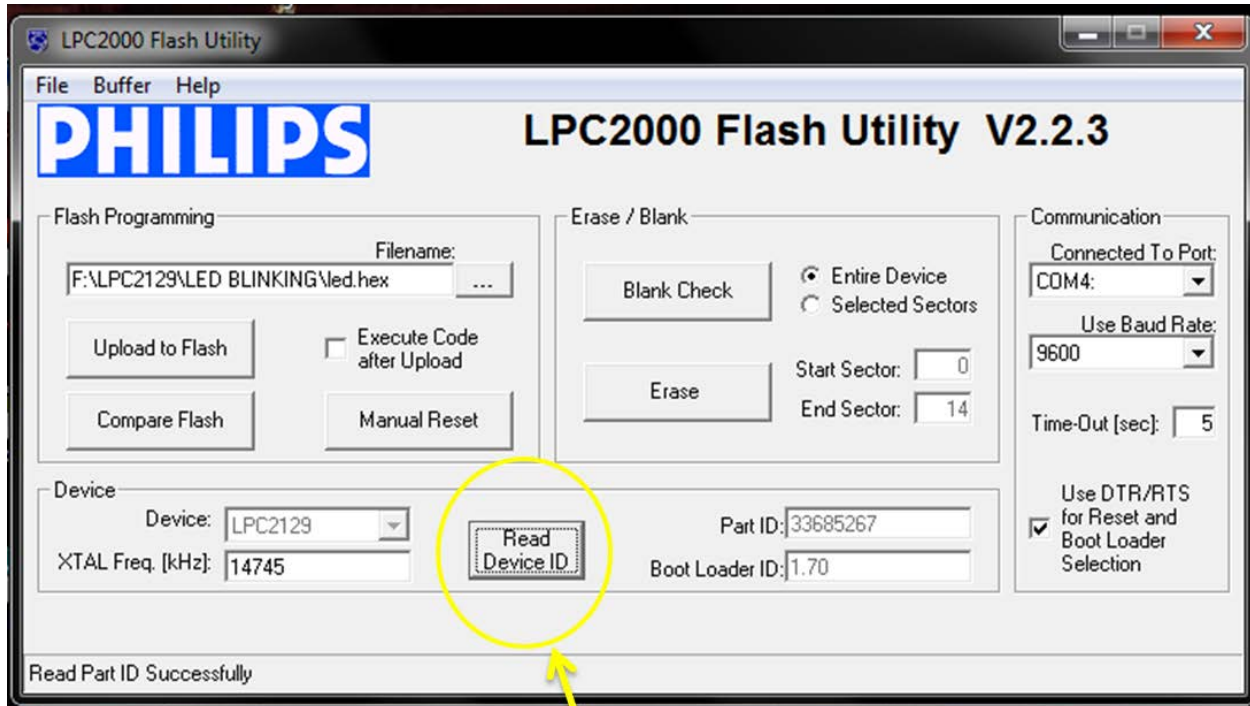
- go to device manager and set the com port to com 4 or anything less than that because in Philips software we can select com from 1 to 5 only



Select the com which you have set and select baud rate as 9600

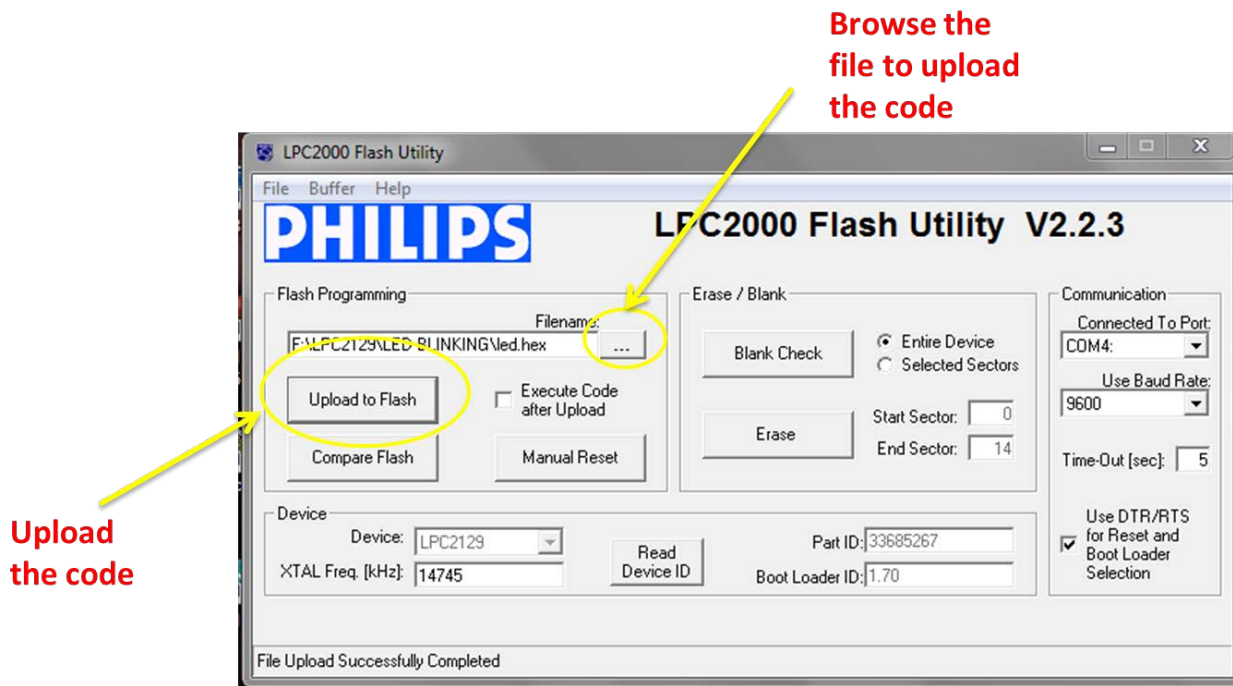
Tick this box





**Click on Read device to check if the arm is connected properly or not**





## CODE

- LED blinking  
<http://researchdesignlab.com/arm-lpc2129-ledblink-code.html>
- 7 segment  
<http://researchdesignlab.com/arm-lpc2129-7segment-code.html>
- LCD  
<http://researchdesignlab.com/arm-lpc2129-lcd-code.html>
- Keypad  
<http://researchdesignlab.com/arm-lpc2129-keypad-code.html>
- UART  
<http://researchdesignlab.com/arm-lpc2129-uart-code.html>
- ADC  
<http://researchdesignlab.com/arm-lpc2129-adc-code.html>